



MOUNTAIN VIEW

2023-24

info



A LOCAL RESOURCE GUIDE PUBLISHED BY THE MOUNTAIN VIEW VOICE

by the numbers | arts & entertainment | outdoors & recreation
education | community | government | MV-Voice.com



Save yourself a trip. Visit your doctor by video.

Doctor appointments have never been so easy. Most Stanford Health Care clinics offer video visits for your convenience. Whether you are a first-time or established patient, a video visit can be appropriate for both primary and specialty care appointments to diagnose and treat many conditions.



Stanford
MEDICINE

Health Care

To schedule a video visit appointment or learn more, contact our clinics directly or go to stanfordhealthcare.org/videoappointments



List your home with **Audrey Sun and The DeLeon Team**
and you will receive all of the following
COMPLIMENTARY SERVICES



Contact us today to
find out how we can
help sell your home!



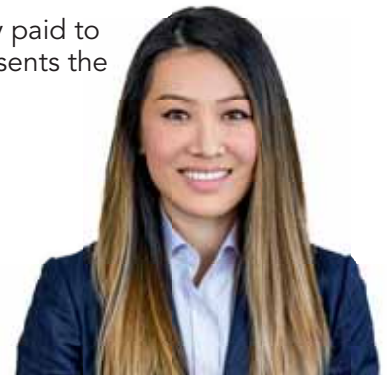
- Dedicated interior designer
- Staging (including furniture, delivery, set up, and de-staging)
- Property and pest inspections
- In-house handyman services
- Real estate attorneys provided to review disclosures and answer real estate and tax-related questions
- Custom website for your home with 3D virtual tour
- Online and social media marketing campaigns
- Professionally produced, narrated videos
- Multiple full-page ads in newspapers such as the Los Altos Town Crier, Palo Alto Weekly, and/or The Almanac
- 12- or 28-page custom home brochures
- Chinese newspaper ads and radio commercials
- Advertising in India West
- We will waive the 2.5% commission normally paid to the buyer's agent if any DeLeon agent represents the buyer, or if the buyers do not have an agent

AUDREY SUN

DRE #01933274

650.785.5822

audrey@deleonrealty.com



Disclaimer

- Legal services provided by the Integra Law Group, LLP.
- Sellers pay a lot of commission when they sell their home—they deserve more. DeLeon pays for all the above-mentioned services, and more, out of our commission when someone lists with us. Meet with Michael Repka to learn more.



An outer layer begins to form on Hangar One during its renovation process at Moffett Airfield in Mountain View in April. Photo by Magali Gauthier.

INFO MOUNTAIN VIEW 2023

Info Mountain View is the Voice's curated resource guide for residents in and around the city of Mountain View.

Every year, our Info publication aims to make it easier for residents to collaborate by capturing key resources and data needed to connect with neighborhood leaders, participate in the community and create positive change.

This year, as we finally emerge from the pandemic and the months of uncertainty that it spurred, Info 2023 has launched a new "Follow the Trail" series of features that shine a spotlight on the many different opportunities available in which to participate and explore the area. The goal is to help Mountain View residents reconnect with the community and one another while rediscovering many activities that were previously put on hold.

Inside, you will find a variety of ways to enjoy the unique offerings that make Mountain View and the greater Midpeninsula area such a sought-after place to live, including local history, one-of-a-kind

festivals, nature preserves and gardens.

As usual, we've also included key resources and information about the community from how to contact the mayor to where to find advocates for seniors and those in need. Our education section offers comparative information on public and private schools. The government chapter provides information on the boards and commissions that guide the city.

In addition to this publication, you can visit MV-Voice.com to stay up to date on news and events happening in Mountain View. Subscribe to Express, a daily email, and have the news delivered right to your inbox. Or check out Weekend Express, emailed on Thursdays, for the scoop on art and entertainment. Both are free; sign up at MV-Voice.com/express.

If you've got suggestions for next year's Info, please email editor@MV-Voice.com. We appreciate your feedback.

Linda Taaffe

Info Mountain View editor

On the cover: Scenes from life in the Mountain View-Los Altos area. Photos by Miles Breen, Vivian Cromwell, Grace Doerfler, Magali Gauthier, Emily Margaretten, Lizzy Myers and Devin Roberts. Photo illustration by Douglas Young.

FEATURES

- 6 Following the Peninsula arts trail**
A resident's guide for exploring music, sculptures and one-of-a-kind arts offerings
- 12 Following the Peninsula's history trail**
Different places and ways to delve into the past while enjoying the present
- 20 Following the Peninsula's flora and fauna trail**
Where to enjoy native plants, flowers and other greenery (and occasional wildlife) in traditional and not-so-traditional settings

INFO RESOURCE DIRECTORY

Find more programs, services and offerings

- 26 Parks & Open Space**
- 28 Social Services**
- 32 Seniors**
- 35 Education**
- 42 The Arts**
- 43 Government**
- 45 Neighborhoods**

Exceptional care for your heart and vascular health

CALL TODAY
No referral necessary



Our patients reflect the diverse fabric of the Golden State. Their needs and life stories are one-of-a-kind, but they seek the same experience: Exceptional heart and vascular care from an exceptional team of medical experts.

OUR SPECIALTIES:

Preventative & Non-Invasive Cardiology | Interventional Cardiology | Structural Heart
Vascular & Endovascular Intervention | Vein Care & Treatment | Cardiac Rhythm Management

gshav.com

650-695-0955

2490 Hospital Drive

Suite 106

Mountain View 94040

Golden State
HEART & VASCULAR



Dr. James Joye



Dr. Ajanta De



Following the arts trail



A resident's guide for exploring music, sculptures and one-of-a-kind arts offerings along the Peninsula year-round

From jazz ensembles performing in a vineyard to a collection of quirky sculptures built under a grove of redwoods to an interactive art laboratory set up in alleyways and downtown streets, the Midpeninsula has no shortage of venues to experience the arts — no matter what time of year. We went from community to community along the Peninsula from Mountain View to Woodside in search of arts offerings, whether longtime favorites, new works or one-of-a-kind offerings. Here are 16 ways to experience the arts during every season.

..... "Boy and Girl in the Calla Lillie" sculpture on Mountain View's downtown art walk. Photo by Kevin Legnon.



MOUNTAIN VIEW

Downtown music series

CASTRO STREET

► *Music and street dining, June - September*

1 Mountain View's Castro Street offers two free music series. Concerts on the Plaza features bands every Friday evening from 6-7:30 p.m., June through September, in the Civic Center Plaza at 500 Castro St. The outdoor concerts include a variety of musical performances. Spectators are encouraged to bring a blanket or lawn chairs. This season's series winds down with Wolf Jett (folk/soul) on Sept. 15, The Groove Foundation (top 40/R&B/funk/rock) on Sept. 22 and The Loose Interpretations (a cappella) on Sept. 29.

The city's new Music on Castro series features singer-songwriters who perform in the street on the 200 block of Castro, which is closed to traffic. Stores and restaurants stay open later in the evening for the event. The series takes place in the downtown commercial district every Wednesday from 5-6:45 p.m. from the start of summer through early fall.

LOS ALTOS

First Friday

DOWNTOWN TRIANGLE

► *Outdoor music, murals, immersive art displays, year-round*

2 Downtown Los Altos comes to life with music and art on the first Friday of every month when more than a dozen bands, from solo performers to 17-piece groups, perform on downtown street corners and sidewalks outside of restaurants and stores. Put on by the Los Altos Mountain View Community Foundation, the monthly music series sprang up in 2011. In addition to music, art enthusiasts at First Friday can enjoy about a dozen murals and interactive and illuminated sculptures in and around the city's downtown triangle.

The collection, which includes both permanent and temporary rotating pieces, is part of a budding program founded by the nonprofit Los Altos Arts. The art is funded with private donations from local residents, business owners, investment groups and foundations. The collection displays a variety of works, including a mural depicting apricot orchards from the city's agricultural past and the 1950s movie theater that once stood on Main Street to "Inflorrescence," an immersive art installation with California poppies and other indigenous wildflowers depicted through both photos and augmented reality. Los Altos First Friday takes place year-round from 6-9 p.m. Free art tours are held from 5-6 p.m., starting at 169 State St. *To sign up for a guided walk or to view the group's art map, go to artslosaltos.org. For more information about First Friday, go to losaltosfirstfriday.org*

IF YOU WANT TO EXPLORE MORE STREET ART ...

Menlo Park and Mountain View offer self-guided art walks in their downtown districts.

3 In Menlo Park, colorful murals and large-scale photographs can be found on display on the exterior walls of about a half-dozen buildings near and around Santa Cruz Avenue thanks to the new nonprofit Elevate Art Menlo Park. *To view the self-guided Downtown Art Walk map, go to elevateartmp.org/artwalk.*

4 Mountain View's downtown is home to about a dozen sculptures, murals and other visual arts displays in the city's public art program that have been commissioned by a variety of public and private organizations. Most of the pieces are scattered throughout the downtown core and accessible by foot, making this a particularly fun way to explore the area while taking in some art. The Civic Center, the train station and Eagle and Pioneer parks are good places to see many of the sculptures. *To view the city's public art map, go to bit.ly/MVartwalk.*

PALO ALTO

Third Thursday

CALIFORNIA AVENUE

► *Dinner and a show*

5 Live music comes to street corners and sidewalks along Palo Alto's California Avenue once a month during the city's Third Thursday music series that launched in May 2023 with six bands and has since expanded. The series features a variety of acts each month, ranging from full jazz bands to guitar soloists. There's also plenty of outdoor dining options and children's games set up in the street, which is closed off to traffic. Palo Alto resident Carol Garsten, the event's producer and a longtime contributor to the First Friday music scene in neighboring Los Altos, said she was inspired to bring something similar to Palo Alto. Third Thursday runs from 6-9 p.m. Free. *3rdthursday.fun.*

The First Friday in downtown Los Altos. Photo by Emily Margaretten.

MOUNTAIN VIEW

85



The Turtle Island String Quartet at the Stanford Jazz Festival. Courtesy Stanford Jazz Festival.

The Stanford Powwow at Stanford University. Photo by Veronica Weber.



Continued on page 8

PALO ALTO

Code: ART

► *Outdoor interactive ‘creative laboratory,’ October*

6 Every other year, Palo Alto’s downtown turns into an interactive “creative laboratory” for three days as part of Code: Art. The Palo Alto Public Art Program brings temporary public art installations and urban art interventions, or “prototypes,” to various locations throughout downtown for the public to explore. Those attending the festival get to provide feedback on which prototypes they’d like to see developed in downtown. This year’s festival is scheduled to take place from 5-10 p.m. on Oct. 12-14 at different locations on University, and Hamilton avenues and Ramona and Emerson streets. Free. cityofpaloalto.org

PALO ALTO

New Works Festival

► *A sneak peek at new plays and musicals, August*

7 During the first two weeks of August, Lucie Stern Theatre (1305 Middlefield Road) becomes ground-zero for a handful of new plays and musicals in their early stages of development at the New Works Festival hosted by Mountain View’s Tony Award-winning theater company, TheatreWorks Silicon Valley. The festival, which marked its 20th anniversary in August, provides theater-goers a unique opportunity to get a sneak peek at new plays in progress while giving the shows’ creators a chance to get audience feedback before finalizing their productions.

Missed the festival? You can catch other TheatreWorks productions at Lucie Stern Theatre or the Mountain View Center for the Performing Arts during the theater’s regular season, which runs from November through June. theatreworks.org/new-works

PALO ALTO

Great Glass Pumpkin Patch

► *Thousands of glass gourds on display, September-October*

8 One of the favorite signs of fall around these parts is the appearance of a particular pumpkin patch filled with gleaming glass gourds. An autumn tradition for nearly three decades, the Great Glass Pumpkin Patch brings over 10,000 blown-glass pumpkins to the grounds of the Palo Alto Art Center every fall. The event, presented by the art center and the Bay Area Glass Institute, features glass pumpkins of every size and color, as well as other autumn-themed glass pieces.

Like actual pumpkins, which take time to grow, this unique harvest is months in the making, with about 25 artists working throughout the year to stock the Great Glass Pumpkin Patch. Visitors who want to learn how this pretty produce is made can check out glass-blowing demonstrations that are held throughout the weekend at the art center.

The 28th annual Great Glass Pumpkin Patch takes place at the Palo Alto Art Center (1313 Newell Road), 10 a.m.- 5 p.m., Sept. 30- Oct. 1. Free. greatglasspumpkinpatch.com

STANFORD

Stanford Powwow

► *A celebration of Indigenous communities, May*

9 Mother’s Day weekend always means something additional at Stanford University: the Stanford Powwow. Each May, the campus becomes the site of traditional dancing, songs, live music, a drum contest, intertribal events and art vendors for the three-day festival that salutes Native American culture and heritage. The event, which has taken place at the university for more than 50 years, draws an estimated 20,000 to 30,000 each year and is one of the larger powwows across the country. The next Stanford Powwow is scheduled to take place May 10-12, 2024, in the Eucalyptus Grove at Embarcadero Road and El Camino Real. Free. stanfordpowwow.org



The Great Glass Pumpkin Patch at the Palo Alto Art Center. Courtesy Great Glass Pumpkin Patch.

STANFORD

Stanford Jazz Festival

► *Rising stars and well-known names in jazz, June-August*

10 The Stanford Jazz Festival takes place for six weeks every summer at various venues on the Stanford University campus providing festival-goers the opportunity to see both well-known names and rising stars in jazz. Over the past five decades since Stanford grad Jim Nadel launched Stanford Jazz Workshop in 1972, the organization has been an incubator for future jazz greats as well as a venue for legends, including Stan Getz and Dizzy Gillespie. In addition to concerts by various artists, the festival also offers favorite regular features such as the Stanford Jazz Workshop all-star jam and early bird jazz for kids. stanfordjazz.org

IF YOU ARE INTERESTED IN A VARIETY OF PERFORMANCES ...

The Stanford Live Arts Festival summer series is held during the summer months at Stanford’s historic Frost Amphitheater (351 Lasuen St.). The picturesque setting has in the past hosted everything from concerts by jazz pioneer Louis Armstrong to performances by the Oregon Shakespeare Festival to symphonies to a tribute to The Beatles. Stanford Live Arts in the past has collaborated with SFJazz, the San Francisco Symphony and the San Francisco Ballet to co-present multiple shows during the six-week run. live.stanford.edu



..... The outdoor sculpture garden at Stanford University. Photo by Veronica Weber.



Juliana Lee MBA/LL.B

Certified Residential Specialist

650.857.1000 (call or text)

homes@julianalee.com



Buying A Home (we make it easy for you):

- If you've done it over 1,000 times before, it can be easy.
- Not everything is obvious, knowing where problems can hide.
- Having extensive solutions to problems.
- Up to date and extensive knowledge of our real estate market.
- Pride in results & exhilaration of achieving the "best" purchase.
- Drive to achieve your goals.

Selling A Home (we make it easy for you):

- Having an experienced team that gets your home ready for sale.
- Having up to date understanding of home buyers.
- Having a successful system in place that promotes your home.
- Having a long history of closing sales.
- Pride in results & exhilaration of achieving the "best" sale.
- Drive to achieve your goals.



The Experts On The Juliana Lee Team Are:

Supporting Our Communities

Since 2013, the Juliana Lee Foundation has provided grants to these and other programs:

- PiE (Partners in Education)
- Gunn High School
- JLS Middle School
- Palo Alto High School
- Paly Athletics Sports
- East Palo Alto schools
- East Menlo Park schools
- Bubb Elementary PTA
- iSing
- Barron Park PTA
- Ohlone Elementary School PTA
- Hoover Elementary School PTA
- Palo Verde Elementary School
- Palo Alto Chinese School
- Fletcher Middle School PTA
- Greene Middle School PTA
- Walter Hays Elementary School
- Get Involved Foundation
- Palo Alto History Museum
- Palo Alto Art Center
- Redwood Shores Elementary Womens Club
- Zhongshan Girls High School
- Alta Vista Home & School Club
- East Palo Alto Kids Foundation
- Ubuntu Scholarship Program
- Menlo Park Atherton Education Foundation
- Mountain View Los Altos High School Foundation
- Shin Shin Educational Foundation
- Logos Baptist Church
- Tzu Chi Foundation
- U.C. Berkeley
- Stanford University Department of Surgery



JulianaLeeFoundation.org

Helping You Make The Most Of Your Real Estate

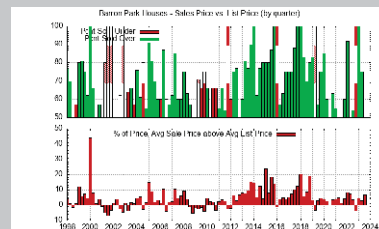
Free, Almost Monthly, Seminars/Webinars for homeowners & would be homeowners to get maximum value from their home.

- Mortgage Loan Options
- Probate, Inheritance, Prop 19
- Airbnb, Vacation Rentals
- 1031 Exchanges
- SB 9
- ADUs
- Homeowner Tax Strategies
- First-time Home Buyer
- Tax Changes



JulianaLee.com/seminar

Guiding You To Make knowledgeable real estate choices



Up to date real estate trends for your neighborhood



Juliana Lee Team - 650.857.1000 - homes@julianalee.com

dre 00851314

STANFORD

Outdoor sculpture tours

► *Docent-led walks of 19th- and 20th-century outdoor collections, year-round*

11 The Cantor Arts Center at Stanford University features a variety of exhibits within its walls but also offers the chance to enjoy the best of both worlds: the great outdoors and an array of unique art. On the second and third Sunday of each month, the center holds docent-led tours of its diverse collection of outdoor sculpture, which is well-known for its numerous works by renowned 19th-century sculptor Auguste Rodin, as well as more modern 20th-century pieces by artists such as Charles Ginnever, Bruce Beasley and Douglas Abdell. Tours are free and meet in front of the museum (328 Lomita Drive at Museum Way, Stanford) at 2 p.m., unless otherwise noted. events.stanford.edu



Visitors interact with a digital installation at Palo Alto's Code: ART festival in 2021. Photo by Heather Zimmerman.

typically sell out fast, so reserve tickets for next season early. portolavineyards.com

IF YOU WANT TO EXPERIENCE CONCERTS AT A HISTORIC ESTATE ...

14 Filoli hosts evening concerts in its meadow during the summer. Guests are encouraged to bring their own blankets and chairs. The estate's Bluebird bar is open for cocktails and non-alcoholic drinks. The summer series features a variety of musical styles, including everything from Latin jazz, Indie pop and blues to Flamenco rumba, hip hop and opera. filoli.org

WOODSIDE

Djerassi Ranch

► *Art and wilderness come together in 3.5-mile excursions, March - November*

15 The one-time cattle ranch that late Stanford chemist Carl Djerassi (creator of the first oral contraceptive pill) transformed into a world-renowned artists' haven opens its doors to the public every Sunday from March through November for guided art hikes, offering visitors a rare look at the massive sculptures that dot the 580-acre private property. The 3.5-mile excursions (which include an elevation change of 300 feet over three hours) take visitors through Djerassi Ranch's redwood forests, grasslands and mountain vistas to view about 40 pieces of art created over the past four decades by artists of the residency program that Djerassi started in 1979. Each sculpture emphasizes the relationship between nature and art. The collection includes a broad mix of pieces, including a 17-foot-tall wooden

Japanese torii gate on a hillside, a miniature clay village built under a grove of redwoods and a sculpture that can only be entered by traversing a winding tunnel in absolute darkness. Public hikes take place every Sunday, at 10 a.m., March 5 through Nov. 26. Djerassi Ranch (2325 Bear Gulch Road, Woodside) offers 12 free hikes a year; the rest of the hikes cost \$50 per person. Reservations are available on a first-come, first-served basis and always fill up quickly. djerassi.org/events/public-hikes/

WOODSIDE

King's Mountain Art Fair

► *Fine art under the redwoods, September*

16 The Kings Mountain Art Fair returned its bucolic setting among the redwoods last year following two years of virtual events due to the pandemic. The juried arts fair, which was founded in 1963 as a fundraiser to help create a volunteer fire department for the remote Kings Mountain Community, is ranked among the top art fairs in the state, according to the Art Fair Sourcebook. The outdoor festival, which takes place on the forested grounds of the Kings Mountain Community Center and Firehouse (13889 Skyline Blvd.), provides visitors a rare opportunity to walk the redwoods while taking in a juried exhibition of gallery quality fine arts and crafts. This year, the festival celebrated its 60th anniversary. Festival takes place over Labor Day weekend each year. Free. Works from artists featured at the fair can be viewed and purchased on the Kings Mountain Art Fair website. kingsmountainartfair.org ⓘ

— Information compiled by Linda Taaffe

The Kings Mountain Art Fair in Woodside. Photo by Vivian Cromwell.



ATHERTON

Music@Menlo

► *Three weeks of chamber music, July-August*

12 For more than two decades, Atherton's Music@Menlo has provided the opportunity for audiences to enjoy and learn about chamber music during its flagship chamber music festival at Menlo School (50 Valparaiso Ave., Atherton) held over three weeks each summer. Music@Menlo offers master classes in which audiences can watch young performers learn from experienced musicians, as well as artist talks and lectures offering insights into featured music. Concerts highlight the works of specific composers and programming explores various aspects of the composers' life and works.

For those who don't want to wait until summer 2024 to enjoy the festival ... Music@ Menlo now offers concert series and lectures throughout the year. Past concerts also can be viewed online. musicatmenlo.org

PORTOLA VALLEY

Jazz in the vineyard

► *Vines, wine, music and scenic views, June - August*

13 This annual jazz festival at Portola Vineyards (850 Los Trancos Road) has brought some of the genre's brightest lights to the winery every summer for over a decade. With support from the city of Palo Alto since its first season, the jazz festival has boasted an impressive lineup every year, including violin maestro Mads Tolling, Latin big band Orquesta Dharma and piano prodigy Javier Santiago. The outdoor jazz series runs from June through August. Concerts



Lynn North has been in the top 5% as a REALTOR® for almost 20 years with The Agency and formerly Compass & Alain Pinel Realtors in the Peninsula.

She was recently honored in the top 1.5% of the real estate professionals in the U.S. based on the 2023 Real Trends ranking!

Lynn North has earned the reputation among her colleagues and clients for honesty, integrity and loyalty.

Learn more at LynnNorth.com

Testimonial

Dave & Sue Kelly

"Lynn North is amazing at what she does, even during the pandemic! She cares about both her buyers and sellers. She is very professional, honest, well-connected and hard-working, all while making you feel like you've been friends forever. We highly recommend her!"



Lynn North
REALTOR®

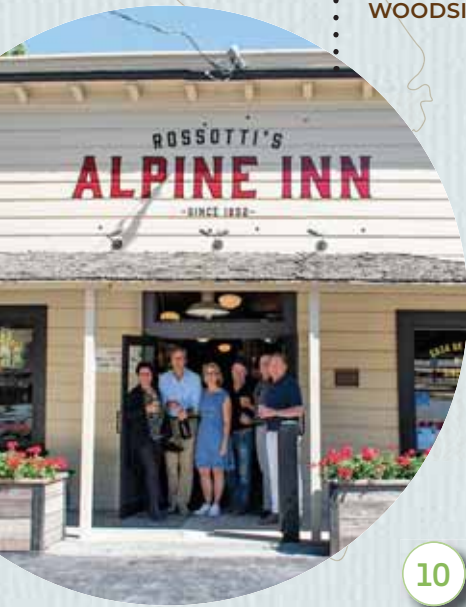
650.703.6437

l.north@theagencyre.com

DRE 01490039

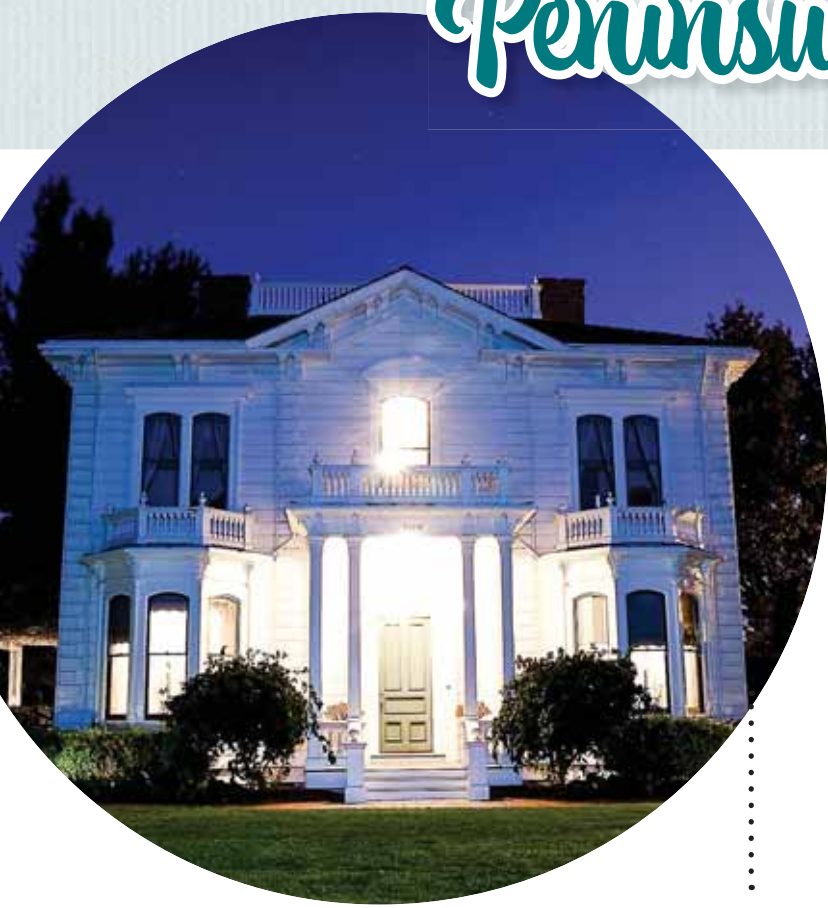
9

Visitors can still grab food and a drink at Rossotti's Alpine Inn, California's second-oldest continually run tavern. Photo by Sadie Stinson.



LOMA MAR

10



The Rengstorff House, Mountain View's oldest home, now hosts special events and exhibits. Courtesy city of Mountain View.

The Heritage Orchard in Los Altos still produces apricots. Courtesy Los Altos History Museum.



Following the Peninsula's history trail

Different places and ways to delve into the past while enjoying the present

With roots tied to indigenous people, Spanish missions, the 1849 gold rush, early logging, agriculture and tech, the Midpeninsula boasts a colorful and varied history with plenty of fascinating historical points of interest. Many of these places are open to the public and provide visitors the opportunity to eat, drink, explore the arts and take in a show in addition to soaking in local history. From a Victorian home to a sprawling country estate to century-old taverns and former movie houses, we explored the region and found a variety of places and ways to appreciate and learn about the past while enjoying the present. This is in no way a comprehensive list of places to visit, but it provides a good starting point.

MOUNTAIN VIEW

Rengstorff House

► *From deteriorated Victorian farmhouse to stunning history museum*

Most people who have ventured into Shoreline Park have probably seen the Rengstorff House — the oldest home in the city and a striking example of Victorian Italianate architecture. Built in 1867 for settler Henry Rengstorff, who came to California hoping to strike it rich in the gold rush but ended up making his money as a rancher, the two-story white wooden home boasts front-facing bay windows, a central gable crowned by a widow’s walk and a front portico flanked with square columns that stand out in stark contrast to the surrounding baylands.

For more than 30 years, the former-farmhouse-turned-history-museum has been open to the public, serving as a



popular destination for weddings, tourists and even ghost hunters. The home is decorated with period pieces and hosts a variety of special events, including rotating exhibits, educational talks, bird-watching excursions along the shoreline and occasionally even candlelit tours.

Now listed on the National Register of Historic Places, the home wasn’t always a welcoming site. Prior to its 1991 opening as a museum at Shoreline Park, the home sat on Stierlin Road and was badly deteriorated and at risk of being demolished. The city of Mountain View purchased the home for \$1, and the community launched a massive effort to restore it.

Free docent-led tours are offered Tuesdays and Wednesdays from 1 - 4 p.m. The garden and grounds are open during Shoreline Park’s regular hours. Friends of “R” House, a nonprofit organization supporting the city-owned landmark that curates and manages the museum exhibit, also offers online exhibits and tours. The museum is located at 3070 N. Shoreline Blvd. **For more information, go to friendsofhouse.org.**

(Source: Embarcadero Media past articles, The Friends of “R” House)

LOS ALTOS

Heritage Orchard

► *A rare glimpse of the area’s agricultural roots*

The apricot orchard in front of City Hall at 1 N. San Antonio Road is among the oldest still in operation in Santa Clara Valley. Planted by early resident J. Gilbert Smith in the early 1900s, this historic landmark provides a glimpse of the city’s agricultural past. It’s a popular site for photographers and artists. Not only can visitors stroll among the trees, they also can purchase apricots harvested in the orchard at the DeMartini Orchard fruit stand across the street when in season (June-August). To ensure that the fruit orchard will continue to thrive in future years, the Los Altos City Council in July approved a three-year contract

with the Association of the Los Altos Historical Museum to restore and preserve the site following recent droughts that impacted the health of the apricot grove.

Behind the orchard is Smith’s shingled farmhouse built from mail-order plans in 1899 that now serves as a history house museum. The house is surrounded by historic gardens, a tank house and farm equipment reflecting the area’s agricultural era. There’s also a modern museum building designed to look like a barn, which contains the city’s historical collections and permanent and rotating exhibits.

Access to the museum and orchard is free. **losaltoshistory.org**
(Source: Los Altos History Museum)

LOS ALTOS HILLS

Old Purissima School

► *Former one-room schoolhouse now serves as a chapel*

The white steeple of St. Luke’s Chapel in the Hills can be seen poking among the trees along southbound U.S. Highway 280, a short distance before the El Monte/Moody Road exit for Foothill College. Before the tiny wooden building on Duval Way was converted into a church in 1966, it served as a one-room schoolhouse for children of the area’s early settlers. From 1901 to 1952, Purissima School, which was part of the Palo Alto Unified School District before the Los Altos School District purchased it in 1948, was a neighborhood elementary school. In the early days, students often would ride their horses to the school, which also served as a community hub where holiday gatherings and other celebrations were held. Generations of Los Altos Hills students attended the school. Alumni include David Packard Jr. (son of David and Lucile Packard) and Carl Schmitt, a former state superintendent of banks in California and founding chairman and CEO of University National Bank, which became Comerica Bank.

St. Luke’s holds Anglican services in the former schoolhouse on Sundays. The chapel is located at 26140 Duval Way (off Robeledda Road). **stlukeschapel.org**
(Source: Los Altos School District documents, interviews with former students)

PALO ALTO

Former Hotel President

► *Revamped 1929 landmark pays homage to architect Birge Clark*

Just about everyone who has driven through Palo Alto likely has seen the Spanish-influenced architecture of Birge Clark. His iconic red-tiled roofs, stucco walls, arches and wrought iron details defined the burgeoning city’s Early California style and had so much influence on the look of its commercial

Continued on page 14



Menlo Park’s former movie house now hosts live music. Photo by Magali Gauthier.

The menu at the newly revamped 1929 Hotel President (now called Graduate Palo Alto) pays homage to architect Birge Clark with a cocktail named for him. Photo by Magali Gauthier.



Continued from page 13

and residential streetscapes that Palo Alto has been referred to “as the city Birge built.”

During a 50-year span, Clark built 98 Palo Alto houses and nearly 400 buildings in and around the city, including the landmark 1929-era Hotel President on University Avenue, which recently has been refurbished and renamed Graduate Palo Alto.

The hotel is a good place to explore Clark’s work since some areas of the building are now open to the public for the first time since the 1950s when it was converted into an apartment building.

While the updated hotel aims to be an upscale homage to all things Stanford and includes portraits and art inspired by some of the university’s more famous attendees, much of the six-story Spanish colonial building that Clark designed has remained intact, including its wood-beamed ceilings, spiral tiled-staircase, wrought iron details and some of the lobby’s historic green tiles from the original 1929 construction.

To pay homage to Clark, the menu at the hotel’s newly opened Lou & Herbert’s cafe and bar features a cocktail named for Clark called “Birge’s Blueprint.” It’s made with gin, sage cordial, saline and palo santo smoke.

Visitors also can take the hotel’s vintage Otis elevator, with a refurbished leather interior, to the top of the building to the President’s Terrace, a rooftop bar with views of downtown and the Stanford quad.

Graduate Palo Alto is located at 488 University Ave. graduatehotels.com/palo-alto/
(Source: Embarcadero Media past articles)



PALO ALTO

Stanford Theatre

► *1920s movie house with organ, classic films*

5 Peninsula film lovers can once again catch a classic movie and hear the Wurlitzer play at Stanford Theatre, which reopened in July. Except for a few months last summer, the Palo Alto movie house has remained largely closed for more than three years due to the pandemic and renovation work. Designed as a movie palace in the Moorish revival style, the theater opened its doors in 1925 with a Leatherbury-Smith orchestral organ that featured pipes ranging from the size of a toothpick to 32 feet tall and was built specifically to accompany silent films.

During the 1960s, the theater fell on hard times and the organ was dismantled and sold. In 1987 after the death of Fred Astaire, local resident David Packard Jr., son of Hewlett-Packard co-founder David Packard, hosted a film festival of Astaire’s works at the theater. The two-week festival was so successful that the David and Lucile Packard Foundation bought and restored the theater, which is now owned and operated by the non-profit Stanford Theatre Foundation.

Taking in a show at the theater is much like experiencing how it was in its early heyday. The theater boasts tile floors, beamed ceilings, red velvet seats and a restored Wurlitzer organ, which includes the 1926 console from Hollywood’s Grauman’s Chinese Theatre and 1928-era pipes from New York’s historic Loew Theatre. The organ is played live during intermissions, as well as to accompany silent films. The theater shows classic movies and often hosts festivals highlighting the works of certain actors or directors. *Find the full lineup of films at stanfordtheatre.org.*

(Embarcadero Media past articles, Wikipedia)

MENLO PARK

Guild Theatre

► *Former movie house now hosts live music*

6 The Guild Theatre (949 El Camino Real) is no stranger to big names: For more than 90 years, a steady parade of stars flickered across the screen of the Menlo Park movie palace. But now, the names that appear on the marquee are performing live inside. After undergoing a \$35 million renovation, the Guild reopened in

..... The original dress from Cecil B. DeMille’s “Cleopatra” on display at the Stanford Theatre in 2018. Photo by Charles Russo.



Visitors can enjoy watching model trains chug along tracks inside California’s oldest train station in Menlo Park. Photo by Magali Gauthier.

February 2022 as a brand-new venue for live music. The 500-seat not-for-profit theater showcases an eclectic mix of national acts, solo musicians, local bands and occasional plays, in an intimate setting, providing lots of opportunities for concert-goers to see their favorite artists up close.

Known as the Menlo when it opened its doors in 1926, the art deco-style movie house was among the earliest theaters to open along the Peninsula and showed films up until fall 2019, according to the Menlo Park Historical Association. Although the theater was recently renovated, the Guild’s 1920s heritage can still be found throughout the space, including the light fixtures and other details, perhaps most notably in an art deco chandelier salvaged from the theater that hangs over the ground-floor bar.

There are also echoes of its movie theater past in the lobby floor, finished with a colorful design reminiscent of vintage movie theater entrances — and the theater’s blade sign remains, refurbished with “Guild” spelled out in new neon lights. guildtheatre.com

(Sources: Menlo Park Historical Association, Embarcadero Media past articles)

MENLO PARK

Historic train station

► *Model trains at California’s oldest train station*

7 Watch miniature passenger and freight trains run on tracks through mini towns and tunnels and over bridges and trestles at the historic Menlo Park train station (1090 Merrill St.). The West Bay Model Railroad Association built a model train display in the former

Continued on page 17

Leave Your Worries
Behind...

We've Got Your
Back

Denise & Jack Welsh

Broker Associates

DRE# 00939903 & 02099304

TheWelshGroup@Sereno.com

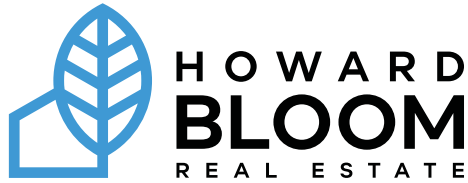


sereno

CHRISTIE'S
INTERNATIONAL REAL ESTATE

CALL US
FOR A
CHANGE
OF PLACE!





EXPERIENCE MATTERS!

OVER 1,800 HOMES SOLD IN 38 YEARS

YOUR LOCAL REALTOR SINCE 1985



“Howard helped us sell our home in Mountain View and did a great job. The real estate market can be fast moving and we really appreciated Howard’s hands-on and reassuring presence. His years of experience and connections paved the way for us.

We recommend him highly.”

- Martin L., Mountain View



HOWARD BLOOM

Lic. #00893793



650.619.2737

INTERO
A Berkshire Hathaway Affiliate

Southern Pacific baggage building adjacent to the train station in Menlo Park where visitors can see the trains go around tracks and talk to club members. The building, constructed in 1867 by the San Francisco and San Jose Railroad Company, is the oldest railroad passenger station in California. The Victorian ornamentation was added in the 1890s when the station was remodeled to serve the newly opened Stanford University. The extension on the northwest was added to accommodate increased traffic generated by the establishment of Camp Fremont nearby during World War I. The station was added to the National Register of Historic Places in 1974, and became a California Historical Landmark in 1983.

The Railroad Association holds monthly open houses and holiday train shows in the building. wbmrra.ning.com

WOODSIDE

Filoli estate

► *An up-close look at life on a lavish, century-old country estate*

9 No list of historical places would be complete without mentioning the 54,000-square-foot Filoli mansion. The Georgian revival-style estate is among the best-known historic properties in the region. With concerts, art strolls, holiday festivals, rotating exhibits and acres of gardens that change with the seasons, visitors can find something different to see or experience during each visit to the 106-year-old property.

Built as a private resident in 1917, the home sits on 654 acres and is considered one of the finest remaining country estates of the 20th century. The property includes 16 acres of English Renaissance gardens, a 6.8-acre gentleman's orchard and hundreds of acres of natural lands with five distinct ecosystems and a 1-mile estate trail. The home and gardens are open for public tours year-round. Admission is charged. filoli.org

(Source: Filoli.org)

LOMA MAR

Sam McDonald Park

► *Cabin retreat an enduring legacy for beloved Stanford superintendent*

10 Sam McDonald Park (13435 Pescadero Creek Road) is in the Santa Cruz Mountains about an hour from Stanford and well-beyond the communities that we explored for historic points of interest to include in this list. Emanuel "Sam" McDonald, who was Stanford University's first Black grounds superintendent and reportedly the only Black man to own property in the California redwoods during that time, left such a remarkable legacy of firsts at Stanford and beyond that we decided to include the park, which was once his home and now open to visitors to enjoy year-round in large part because of his efforts. McDonald bequeathed his 450-acre property to Stanford to use as a park for the benefit of young people. San Mateo County acquired the land in 1958 and dedicated it for public use in 1970.

The park, which has since expanded to include 850 acres, includes an old-growth redwood forest, oak woodlands, grassland habitat and chaparral and amazing views of the Pacific Ocean as well as campgrounds and a hut for hikers, but the main historical attraction is McDonald's cabin.

The vacant, red wooden structure (called "Chee-Chee-Wa-Wa") suffered flood damage in 1999 and is in need of repair, but it still provides visitors a glimpse of the past when it served as McDonald's weekend getaway. McDonald, who reportedly had a wider acquaintance with students and faculty than any other member of the Stanford family did, turned his home in the woods into a weekend and holiday retreat, hosting countless barbecues for Stanford faculty and sports teams.

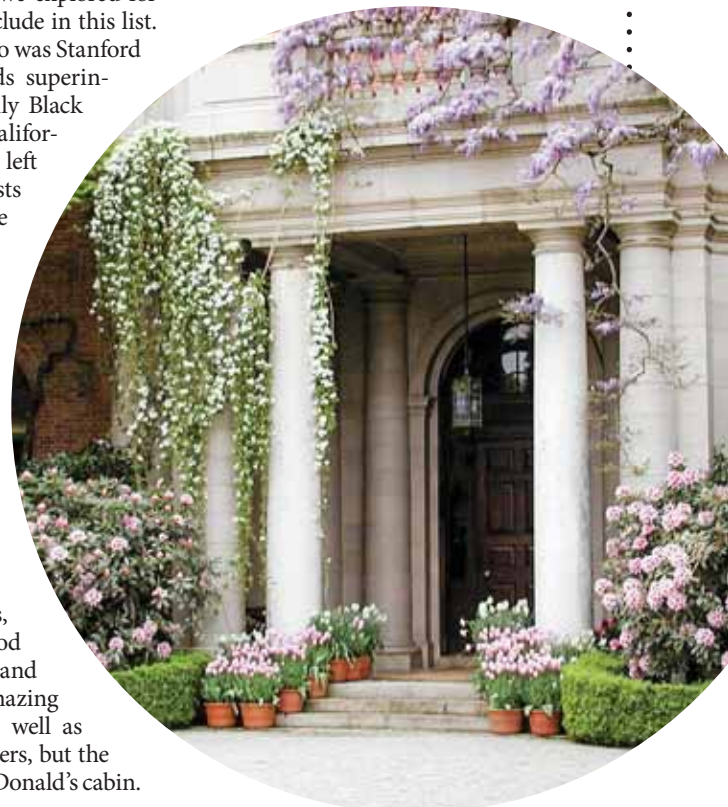
Born in Louisiana in 1884, the grandson of slaves, McDonald moved to Mayfield (south Palo Alto) when he was a teen and worked his way up the ranks at Stanford, becoming the university's Superintendent of Athletic Grounds and Buildings in 1908, a position that he held until retirement in 1954. He also served as a Secret Service Agent for the Treasury Department, Deputy Constable for Palo Alto and Deputy Sheriff for Santa Clara County. Locally, he was a beloved "godfather" to scores of children at the Stanford Convalescent Home for Underprivileged Children, which was his favorite charity. The home's annual volunteer day became known as Sam McDonald Day in his honor.

To visit McDonald's cabin, take the 2.6-mile Forest Loop Trail at the park's main parking lot to Old Stage Road. The cabin is located just past Trail Marker 1. openspacetrust.org/hike/sam-mcdonalds-cabin

(Sources: greenbelt.org, Peninsula Open Space Trust, smcgov.org, KQED) 📍

— Information compiled by Linda Taaffe

Filoli provides visitors an up-close look at life on a lavish, century-old country estate. Embarcadero Media file photo.



PORTOLA VALLEY

Rossotti's "Zott's" Alpine Inn

► *Second-oldest continually run tavern in California*

8 Rossotti's Alpine Inn (3915 Alpine Road) is the place to soak in some local color and history while enjoying food and drinks. Dating back to 1852 and being the second-oldest continually run tavern in California, the place and its lore have attracted a wide cast of characters and fans, from patrons arriving on horseback to tech workers in Teslas and local families looking for a bite to eat after a game at nearby Rossotti Field. Alpine Inn has served generations of families from Portola Valley and nearby communities who treat the establishment as a home away from home. (Before the 2018 ownership change and renovations, it was known as a place where patrons would carve their names into the restaurant's booths. The tabletops since have been repurposed into a wall next to the outside bar and a planter for a small herb and vegetable garden.) Inside, the tavern is decorated with Stanford athletics memorabilia donated by an alumnus.

The restaurant also still has "horse parking" out front (a group of locals still arrive on horseback some weekends) and a plaque marking the "beginning of the internet age" in 1976 when a crew of SRI scientists, sitting at a picnic table in the beer garden, successfully sent an electronic message from a computer.

The restaurant's menu ranges from elevated bar bites like garlic herb and parmigiano reggiano fries served with tarragon aioli to entrees including salads, burgers, sandwiches and wood-fired pizzas, plus tavern specialties like ribs and tacos. There's limited seating in the tavern and a 250-seat beer garden with covered seating, heat lamps and TVs for sports fans. alpineinnpv.com

(Sources: The SixFifty, the Peninsula Foodist)



Your local electricity provider since 2017

\$84M

Dedicated to customer rebates & offers

\$90M

In on-bill savings for all customers since launch

Learn more about The Power of Community at SVCleanEnergy.org.





Serving Mountain View Since 1986



**I CAN ASSIST
YOU WITH**

Buying Real Estate
Selling Real Estate
Investment Properties
Property Valuation
Pre-Market Prep Work

Tori Atwell | Tori.Atwell@TheAgencyRE.com
REALTOR® | 650.996.1023 | LIC. #00927794



Edgewood Park and Nature Preserve in Redwood City. Photo by Magali Gauthier.



Snowy egrets, like this one pictured here, breed in trees at Google's campus each spring. Courtesy Pexels.



Following the Peninsula's flora and fauna trail



Nature preserves are the obvious places to enjoy local greenery, but don't count out city parks, shopping centers or tech campuses

Those looking to soak in some nature don't have to travel far. In fact, they don't have to make a trek to the mountains or baylands. From flower walks at a shopping mall to a tech campus with an egret colony to a downtown park with acres of redwoods, the Peninsula offers plenty of ways to enjoy native plants, flowers and other greenery (and occasional wildlife) in unexpected settings. While these are hardly replacements for the thousands of acres of open space in the area, they do provide some respite from the daily grind — which is why we decided to compile a list of traditional and not-so-traditional destinations to enjoy nature in all its glory.

Redwood Grove Nature Preserve in Los Altos. Photo by Sophia Markoulakis.

MOUNTAIN VIEW

The Rookery

► *Every spring, egrets return to breeding colony at Google*

1 Google's Mountain View campus is home to great egrets, snowy egrets and black-crowned night-herons. Every spring, they return to the campus to raise their young in the street trees along Shorebird Way, or "The Rookery" (in the 1209-1231 blocks), where they have established a colony. From March to August, spectators can watch the entire breeding cycle. Great egrets usually arrive first, followed by the snowy egrets and night-herons, according to the Santa Clara County Audubon Society.

Historically, this area was dominated by wetlands and willow groves. It has changed over the years, but generations of birds still use the trees lining the street for their breeding colony. This rookery hosts 20% or more of the great egret colonies that are monitored in the Bay Area. Santa Clara Valley Audubon Society and other organizations help Google and the city of Mountain View steward the egrets at this site. Shorebird Way is closed to traffic after the egret chicks hatch to protect the birds and people who like to watch them from the road. scvas.org/egrets

(Source: Santa Clara Valley Audubon Society)

LOS ALTOS

Redwood Grove Nature Preserve

► *Walking among giants within steps of downtown*

2 The Redwood Grove Nature Preserve (482 University Ave.) is located within walking distance of downtown Los Altos. Maintained by the city and Grassroots Ecology, a nonprofit organization dedicated to caring for public lands, the park provides visitors an opportunity to explore various ecosystems. Here, visitors can walk along wooden catwalks and trails that wind through 6 acres that include a redwood forest, riparian floodplain, oak woodland and native meadow. The preserve also is home to a colony of great blue herons that breed and nest from March to May along the Adobe Creek that runs through the park. For those who want to learn how to garden with California native plants, the park includes a demonstration garden, too.

This park is unique in the area because redwood forests are typically found closer to the coast where they receive moisture from the fog. All of the redwoods at the park were transported from the Santa Cruz Mountains as saplings and planted in Los Altos in the 1920s. The trees are watered using tree sprinklers. The park is open 6 a.m. to 9 p.m. daily. losaltosca.gov/parksrec/page/redwood-grove-nature-preserve

(Source: Grassroots Ecology)

PALO ALTO

King Tides, Palo Alto Baylands

► *Observing rare birds during the highest, lowest tides of the year*

3 The Palo Alto Baylands Nature Preserve provides visitors the perfect place to witness the exceptionally high and low tides that only happen a few days each winter when the Earth, sun and moon align, creating a gravitational pull on the ocean. These tides, known as king tides, can rise above 9 feet — or about 2 feet higher than the average tide — causing flooding in parts of the Baylands. They also may force some rare birds out of hiding, making it more likely to see things you don't normally observe in the marshland. The annual phenomenon attracts more than 1,000 visitors to the Baylands. The next California King Tides will happen at the start of 2024 on Jan. 11-12 and Feb. 9.

During the king tides, the nonprofit Environmental Volunteers lead free interpretive walks through the baylands that stop at sites that provide the best views to admire the higher-than-normal tides and learn about tidal systems. Trained volunteers explain what king tides are, how they affect the marsh and point out species, such as egrets, ducks and sparrows. Tours begin at the Environmental Volunteers EcoCenter (2560 Embarcadero Road), where the king tides are most notable. evols.org

(Sources: Embarcadero Media past articles)

PALO ALTO

Second Saturday, Gamble Garden

► *Nature activities in historic garden*

4 Since 1985, the extensive gardens that Elizabeth F. Gamble first planted on her estate in downtown Palo Alto in the early 1900s have been restored and expanded and open for the community to enjoy. The 2.5-acre nonprofit Gamble Garden (1431 Waverley St.) includes a rose garden, cutting garden, formal herb garden, demonstration bed, wisteria garden, an allée, a rain garden and more. The gardens are so extensive, that the self-guided walking tour includes 24 points of interest, from A through Z. Gamble Garden is especially known for its extensive collection of camellias, which visitors will find in almost every corner of the property. The collection includes several rare camellias, including the camellia japonica "Kumasaka," one of the oldest in continuous culture that dates back to 1695. Gamble's camellias have been recognized by the American Camellia Society as part of the American Camellia Trail of notable collections.

For those who want to visit the gardens and the historic Colonial-Georgian Revival home, the grounds are open to the public daily, and

special activities, exhibits and classes are offered year-round. On every second Saturday of the month, Gamble Garden opens its doors to the community for a morning of various nature-themed activities, including garden tours and nature hunts. On the Second Saturday on Oct. 14, visitors can learn about butterflies and bats. Open daily during daylight hours. Free.

gamblegarden.org

(Source: Gamble Garden)

STANFORD

Stanford Shopping Center garden walk

► *Dozens of colorful garden beds positioned throughout the mall*

5 Stanford Shopping Center launched its Stanford Garden Walk this past spring to provide visitors an opportunity to explore and learn about more than 50 varieties of annuals, perennials and rose-like flowers grown in large planters and raised garden beds positioned around storefronts throughout the 1.4-million-square-foot outdoor mall. Simon Property Group, which operates the shopping center, kicked off its garden walk with a special guided stroll in April. Those who missed the inaugural tour can explore the gardens any time on their own. The flowers bloom throughout spring and summer and each planter features stakes with a QR code that can be scanned to learn more about the current blooms, including interesting tidbits, special characteristics of floral varieties, their symbolic meanings and growing tips.

The self-guided, interactive tour was designed with the help of Jackie Gray of Mer-rivale Design, who has been the longtime garden designer for the shopping center. stanfordgardenwalk.splashthat.com

(Source: Simon Property Group)

STANFORD

Arizona Cactus Garden

► *Rare collection of cacti, succulents*

6 The Arizona Cactus Garden (450 Jane Stanford Way) is one of Stanford's oldest living attractions — older than the university itself — with roots reaching back to late 1881. The 17,000-square-foot garden features densely tangled prickly pear plants, twisted spines and towering yucca trees and a collection of other unusual plants straight out of Mexico's Sonoran desert. Commissioned by Leland and Jane Stanford, the garden was one of several "Arizona Gardens" created by landscape architect Rudolph Ulrich. His design blended formal symmetrical plantings with the textures and colors of imported succulents. In its heyday, the

Continued on page 22

garden included thousands of varieties of cacti and succulents that rarely, if ever, grew naturally in the Bay Area. Leland Stanford, who was president of the Central Pacific Railroad, reportedly gave Ulrich unlimited use of boxcars to haul specimens out of the desert. Over 500 varieties of cactus, succulents, ice plants and other rare and unusual specimens now grow abundantly in the 58 stone-lined garden beds, including a dozen or so original species from the 1880s. To tour the garden, park at the lot at Welch and Quarry roads and follow the path past the mausoleum. facops.stanford.edu/arizona-garden

(Source: Embarcadero Media past articles)

MENLO PARK

Allied Arts Guild

► *European-style garden courtyards in a historic setting*

7 Located in a quiet neighborhood on the south edge of Menlo Park is the Allied Arts Guild (75 Arbor Road), a group of historic Spanish-style buildings clustered around extensive courtyard gardens reminiscent of those surrounding the Alhambra Palace in Spain. Designed by famed Palo Alto architects Gardner Dailey and Pedro Joseph de Lemos in the late 1920s as a serene workplace for artists, the complex is owned by the nonprofit Allied Arts Guild Auxiliary, which generates funds at the arts center to support the Lucile Packard Children's Hospital. The complex includes artisan workshops and retail spaces, a cafe, and several conference rooms.

The gardens were an important element of the complex's original design and featured annuals that mingled with hearty Mediterranean perennials and native plants. In 2006, the gardens received a complete overhaul by PGAdesign. Besides refurbishing the existing gardens, the design team also expanded them. Visitors now can enjoy three distinct garden areas. The Garden of Delight, or Blue Garden, features hydrangeas, asters and blue-Nile lilies centered around a bubbling blue-tiled fountain. This area also is home to Café Wisteria, providing visitors an opportunity to enjoy lunch overlooking the garden.

The Court of Abundance is named for the golden colors of the orange trees, yellow marigolds, wallflowers and nasturtiums that grow around a central fountain surrounded by a geometric maze of hedges.

The Rose Allée features a rose-lined pathway that begins at the archway building and leads to an 1885-era barn that was converted into a woodworking shop. The garden was inspired by the Rose Allée at the Alhambra Palace where Spanish kings and queens would stroll along the paths enjoying each tree rose.

Many flowers and plant species are identified with garden markers. There's also an online map with a history of the complex and its gardens

available on the Guild's website. Hours are Monday-Saturday, 10 a.m. to 5 p.m. alliedartsguild.org

WOODSIDE

Filoli

► *Garden parties, orchard walks, open space hikes*

8 The historic Filoli estate (86 Cañada Road) is home to 16 acres of English Renaissance gardens, a 6.8-acre gentleman's orchard and hundreds of acres of natural lands with five distinct ecosystems. The nonprofit hosts guided and self-guided garden walks, seasonal garden parties, exhibits and other activities and special events highlighting different blooms (which range in the tens of thousands) throughout the year. From now through Nov. 6 as part of the special exhibit "Bringing the Garden Indoors," the interior of the home also will be filled with blooms and floral arrangements made from cut flowers from the garden to show how the families who once lived there used the estate's plants to decorate the home.

For those who want to explore the open space surrounding the home and its gardens, take the Estate Trail, a 1-mile self-guided walk that passes through a variety of ecosystems, including oak-madrone forests, redwood groves and chaparral. There are also natural springs and creeks, a reservoir and cultivated grasslands. Deer, turkey and dozens of bird species are often spotted along this route. Visitors following this trail also can walk over the region's best-known earthquake fault: The Fault Creek Bridge straddles the San Andreas Fault, with one end on the North American Plate and the other on the Pacific Plate. *For hours, special event calendar, admission prices and tickets, go to filoli.org.*

REDWOOD CITY

Edgewood Park and Nature Preserve

► *Spring wildflower hikes bursting with color*

9 While local preserves are home to hundreds of wildflower species that flower from early spring all the way through the later winter months, March, April and May bring the highest frequency and diversity of blooms — and plenty of opportunities to enjoy the grasslands in full color. On Saturday and Sunday mornings from early March through June, docents at Edgewood Park and Nature Preserve (10 Old Stage Coach Road) offer 3-mile leisurely walks starting at the park's Bill and Jean Lane Education Center. Look for chick lupine and purple coyote mint that is limited to California. Western



The Filoli estate in Woodside. Courtesy Gretchine Wilson/Filoli.

monarchs love to feed off this native's pollen, so keep an eye out for this butterfly species. Free. friendsofthewood.org

IF YOU WANT TO EXPLORE WILDFLOWERS ON YOUR OWN ...

Wildflowers can be viewed at more than a dozen local preserves and trails with lots of options for all levels of hikers, including more challenging hikes at Russian Ridge Open Space Preserve and easily accessible trails at Pearson-Arastradero Preserve:

10 In Redwood City, Russian Ridge Open Space Preserve (Skyline Boulevard and Page Mill / Alpine Road) includes 3,000-acres with lots of trail options. For the most bang for your buck, start at the Ridge Trail where Page Mill Road and State Route 35 meet on the northwest corner. All of the grassland trails offer lots of wildflower-viewing possibilities. Hikers might spot vibrant red Indian paintbrush or white Fernald's Iris on sloping sunny hill-sides. Look for western houndstongue, which is part of the borage family and thrives under the shade of oak trees. The park is open a half-hour before sunrise to a half-hour after sunset. openspace.org/preserves/russian-ridge

11 In Palo Alto, Pearson-Arastradero Preserve has more than 10 miles of trails easily accessible off Interstate Highway 280 (1530 Arastradero Road, between Page Mill and Alpine roads). The Arastradero Creek Trail is a relatively easy, one-way 1.44-mile trail with moderate hills. Enter from Foothills Nature Preserve and pass the lake before making the hike uphill. The gravel and dirt trail is nice and wide in most locations. Lots of sky lupines and California poppies are visible from various spots along the route. The park is open 8 a.m. until sunset. bit.ly/ArastraderoPreserve

— Information compiled by Linda Taaffe

DREAM OF A HOME UNIQUELY YOURS



Let me help
you turn your
daydream into
your *reality*.



irene  yang

Irene Yang

650.402.0302

IreneYang.com

DRE 01724993

Compass Los Altos

167 S. San Antonio Road

Los Altos, CA 94022



DEDICATION | EXPERIENCE | INTEGRITY

 Compass is a real estate broker licensed by the State of California and abides by Equal Housing Opportunity laws. License Numbers 01079009. All material presented herein is intended for informational purposes only and is compiled from sources deemed reliable but has not been verified. No statement is made as to accuracy of any description.

COMPASS

AVENIDAS PROGRAMS HELP YOU RE-CONNECT



Avenidas Village

A community of support for aging in place

Pre-Screened Vendors • Transportation Assistance
Members-Only Website • Handyman & Tech Support
Social Events & Interest Groups
Network for Resource Sharing



Avenidas Learning & Leisure

Offering opportunities for personal development

Art, Drama, Writing • Wine Appreciation
Current Events & Lectures • Games & Clubs
Medicare, Legal, & Tax Counseling Services
Offerings In-Person & Online



Avenidas Care Partners

Guiding people through life's transitions

Elder Care Consultations • Care Management
Individual & Family Counseling • Family Caregiver
Support Groups • Information & Referral Services
Community Presentations



Avenidas Rose Kleiner Center

Caring for participants in a safe, nurturing day program

Daily Nursing & Health Monitoring • Music & Art
Group Exercise • Social Work Services & Caregiver Support
OT, PT, & Speech Therapy Services • Nutritious Lunches
Holiday Celebrations • Transportation



Avenidas Health & Wellness

Keeping adults active & informed

Fitness Classes • Health Lectures & Screenings
Therapeutic Nail Care • Meditation & Yoga
Tai Chi & Feldenkrais • Massage & Reiki
Medical Equipment Loan Closet

CONNECT AND RE-DISCOVER YOURSELF



Avenidas Chinese Community Center

Exploring cultures, customs, and community building

Activities in both English and Mandarin • Cultural celebrations

Avenidas華人社區中心

探索文化，習俗及建立共融社區

普通話及英文雙語活動 • 傳統文化節慶慶祝



Avenidas Volunteer Corps

Sharing your time and talents

Tutor Kids • Help with Events & Projects

Provide Rides • Outreach Calls & Visits

Lead a Class or Activity



Avenidas Door to Door

Keeping seniors connected

Rides for Medical or Social Needs

Deliveries • Friendly Calls & Visits



Avenidas Rainbow Collective

Delivering resources and services needed
by LGBTQ Seniors

Socialization • Case Management • Health & Wellness
Cultural Competency Workshops • Information & Assistance
Caregiving Support & Resources



Avenidas Technology PLUS

Helping seniors navigate the changing world of tech

Tech Workshops on Hot Topics

One-on-One Tech Tutoring

Licensed Senior Planet from AARP Classes

Offerings In-Person & Online • Class Scholarships Available

INFO RESOURCE DIRECTORY

Our annual Info Resource Directory aims to connect Mountain View residents with local community resources. This comprehensive guide

includes information about the area's parks, government, schools, youth programs and arts, as well as services for seniors and those in need.



A family walks at Baylands Nature Preserve in Palo Alto. Photo by Magali Gauthier.

PARKS & OPEN SPACE

Mountain View boasts 40 parks and nearly 1,000 acres of open space providing plenty of opportunities to explore the outdoors from the shores of the Baylands to downtown's plazas and neighborhood parks to the foothills of the Santa Cruz Mountains that connect to 220 miles of regional trails. Here's a look at Mountain View's outdoor spaces:

Parks and trails are open from 6 a.m. to one-half hour after sunset, unless otherwise indicated.

For more information: 650-903-6392 | bit.ly/3rGpl2W

Bubb Park*

Barbara Avenue and Montalto Drive

- 9 acres
- Basketball, volleyball, softball, sports field, playground, horseshoe area, restrooms, picnic area

Castro Park*

Toft and Latham streets

- 5.5 acres
- Basketball, volleyball, playground, picnic area

Charleston Park

Charleston Road and Shoreline Boulevard

- 7 acres
- Large green space, scenic vistas, restrooms

Chetwood Park

Pacific and Whisman Station drives

- 0.92 acres
- Picnic area

Cooper Park

Chesley Avenue and Yorkton Drive

- 11 acres
- Basketball, tennis, softball, sports field, playground, picnic area, restrooms

Creekside Park

Easy Street and Gladys Avenue

- 0.78 acres
- Playground, picnic area, trail access

Crittenden School Park*

1701 Rock St.

- 11.24 acres
- Softball, soccer, basketball, restrooms

Cuesta Park

615 Cuesta Drive

- 25 acres
- Barbecue and picnic facilities, bocce ball, tennis, volleyball, horseshoes, playground, restrooms

Dana Park

Dana and Oak streets

- 0.3 acres
- Play area

Del Medio Park

380 Del Medio Ave.

- 0.35 acres
- Mini-park with a sand play area, picnic tables, walking trail

Devonshire Park

62 Devonshire Ave.

- 0.65 acres
- Play equipment, swings, arbor, picnic tables

Dog Park

Northeast corner of Shoreline Boulevard & North Road

- 0.66 acres
- Fenced areas for small and large dogs off-leash

Eagle Park

650 Franklin St.

- 6 acres
- Playground, swimming, picnic area, restrooms

Evandale Park

Evandale Ave. & Piazza Drive

- Picnic tables, playground

Fairmont Park

476 Fairmont Avenue

- Open lawn space, picnic tables, playground

Gemello Park

Marich Way and Solana Court

- 0.5 acres
- Playground, picnic area

Heritage Park

771 N. Rengstorff Ave.

- 1.2 acres
- Historic Immigrant House, 80-year-old windmill, native beehives, demonstration garden

Hidden Villa Farm and Wilderness Preserve

26870 Moody Road, Los Altos Hills

- 1,600 acres/8 miles trails
- Nonprofit organic farm and nature preserve; open 9 a.m. to dusk, Tuesday - Sunday. (Closed to the public for Summer Camp sessions.)
- 650-949-8650 | hiddenvilla.org

Amy Imai School Park*

253 Martens Ave.

- 5.1 acres
- Playground, baseball, soccer

Jackson Park

Jackson Street and Stierlin Road

- 0.84 acres
- Playground, picnic area

Klein Park

Ortega Avenue and California Street

- 1 acre
- Basketball, playground, picnic area

Landels Park*

Dana Street and Calderon Avenue

- 10 acres
- Basketball, soccer, football, softball, volleyball, playground, picnic area, trail access

Magnolia Park

Magnolia Lane and Whisman Station Drive

- 1.1 acres
- Playground, picnic area, fountain

Mariposa Park

305 Mariposa Ave.

- 0.6 acres
- Playground, picnic area, water-sand play feature

McKelvey Park

Miramonte Avenue and Park Drive

- 0.6 acres
- Baseball, softball, restrooms, Schaefer Park playground

Mercy-Bush Park

513 Bush St.

- 0.6 acres
- Mini-park with play and picnic areas

Monta Loma Park*

460 Thompson Ave.

- 7 acres
- Baseball, basketball, playground, picnic area, restrooms

Mora Park

Ortega Ave. & Mora Place

- Fitness equipment, open lawn space, public art bench

Pioneer Park

1146 Church St. (behind City Hall)

- 5 acres
- Rolling lawns, oak trees, pathways, benches, rock garden

Pyramid Park

Infinity Way and Pyramid Way

- Basketball court, dog park, fitness equipment, picnic tables, playground, public art

Rancho San Antonio Preserve (Deer Hollow Farm)

22500 Cristo Rey Drive, Los Altos Hills

- 3,988 acres/25 miles of trails
- A working farm with barnyard animals; restored Grant Ranch Cabin; trails link

to San Antonio County Park; open half-hour before sunrise to half-hour after sunset.

- 650-691-1200 | openspace.org/preserves/rancho-san-antonio

Rengstorff Park

201 S. Rengstorff Ave.

- 23 acres
- Baseball, softball, basketball, tennis, volleyball, swimming, skate park, playground, barbecue and picnic areas, restrooms, community center

Rex-Manor Park

Farley Street and Central Expressway

- 1 acre
- Playground, picnic area

San Veron Park

San Veron Avenue and Middlefield Road

- 2.08 acres
- Basketball, volleyball, playground, picnic area

Schaefer Park

914 Mountain View Ave.

- 2 acres
- Mini-park, playground, walking path

Shoreline at Mountain View Park

2600 N. Shoreline Blvd.

- 750 acres
- 50-acre sailing lake and center, 18-hole golf course, more than 10 miles of trails that link with Palo Alto and Sunnyvale, birdwatching, Michael's at Shoreline and the Lakeside Cafe. (Aquatic Center rents sailboats and windsurf boards as well as paddle boats and kayaks.)
- shorelinelake.com | mountainview.gov (search "shoreline")

Sierra Vista Park

Sierra Vista Avenue & Plymouth Street

- 0.8 acres
- Playground, picnic area

Springer School Park*

1120 Rose Ave.

- 3.25 acres
- Soccer, playground

Continued on page 28

Mountain View Parks & Recreation Facilities



MAP KEY

- Parks
- Recreation Facilities

Continued from page 26

Stevens Creek Trail

Dale Avenue at Heatherstone Way

- Hiking, biking (Trail starts at Shoreline Park and runs along Highway 85.)
- stevenscreektrail.org

Stevenson Park

750 San Pierre Way

- 12 acres
- Basketball, soccer, football, softball, tennis, playground, picnic area, restrooms

Sylvan Park

Sylvan Avenue and DeVoto Street

- 9 acres
- Tennis, horseshoes, playground, barbecue and picnic area, restrooms

Thaddeus Park

2395 Middlefield Road

- 0.68 acres
- Playground, picnic area

Varsity Park

Jefferson Drive & Duke Way
220 N. Whisman Road

- 0.45 acres
- Basketball, playground, picnic area

Whisman Park

Easy Street and Middlefield Road

- 12 acres
- Basketball, soccer, football, softball, tennis, volleyball, playground, barbecue and picnic area, restrooms, trail access

Wyandotte Park

2254 Wyandotte St.

- Fitness equipment, open lawn space, picnic tables, playground, public art

SPORTS & RECREATIONAL FACILITIES

GOLF (PUBLIC COURSE)

Shoreline Golf Links

2940 N. Shoreline Blvd.

- 18-hole course overlooking the Bay, 16 acres of water hazards
- 650-903-GOLF (4653) | shorelinelinks.com

SAILING AND SAILBOARDING

Shoreline Aquatic Center at Shoreline Lake

- See Parks & Open Space

HORSEBACK RIDING

Westwind Community Barn

27210 Altamont Road, Los Altos Hills

- 4-H therapeutic riding
- 650-941-6113 | losaltoshills.ca.gov/parks (search "Westwind Community Barn")

MULTI-SPORT COMPLEXES

Whisman Sports Center

1500 W. Middlefield Road

- Basketball, volleyball, sports fields, gym

Graham Sports Complex*

1175 Castro St.

- Basketball, volleyball, sports fields



Sergey Finkelstein, left, tries to get the ball from Svetlana Platonova, a U.S. Women's National Kayak Polo Team player during a recreational scrimmage at Shoreline Lake in Mountain View. Photo by Magali Gauthier.

Rengstorff Park

- See Parks & Open Space

TENNIS

Cooper Park

500 Chesley Ave.

Cuesta Park

615 Cuesta Drive

Rengstorff Park

- See Parks & Open Space

Stevenson Park

750 San Pierre Way

Sylvan Park

550 Sylvan Ave.

Whisman Park

400 Easy St.

SWIMMING

Eagle Park Pool

650 Franklin St.

Rengstorff Park

- See Parks & Open Space

SKATEBOARDING

Rengstorff Park

- See Parks & Open Space

* Not open during school hours

SOCIAL SERVICES

All services are located in Mountain View, unless otherwise noted.

COUNSELING

Mental Health and Substance Use Services, Santa Clara County

- Drug and alcohol treatment and placement referral for adolescents and adults
- 800-488-9919 | bhsd.sccgov.org

Allcove

2741 Middlefield Road, Palo Alto

- Health clinic for youth, offering mental health support, primary care, substance-use addiction services and peer support
- Appointments: 650-798-6330; Crisis Text Line: 741741 | allcove.org

Community Health Awareness Council (CHAC)

590 W. El Camino Real

- Counseling services for residents and students in Mountain View, Los Altos, Los Altos Hills and surrounding communities
- 650-965-2020 | chacmv.org

The La Selva Group (Part of Momentum for Mental Health)

4139 El Camino Way, Palo Alto

- Various levels of care: psychiatry, residential (24-hour staffed) treatment, outpatient program, individual and group therapy, supportive housing, case management and after-care/ alumni services. Free virtual counseling services for those impacted by the pandemic.
- 650-617-8340 | thelaselvagroup.org

Outlet Program, Adolescent Counseling Services

1779 Woodside Road, #200, Redwood City

- Support and empowerment program for lesbian, gay, bisexual, transgender, queer teens
- 650-424-0852, ext. 107 | acs-teens.org

Suicide Crisis Hotline

- 988; Crisis Text Line: 741741

Domestic Violence Crisis Line (YWCA Silicon Valley)

375 S. Third St., San Jose

- Support and services in the areas of domestic violence, sexual assault, human trafficking, counseling, youth

services and child care

- 24-hour hotline: 800-572-2782 | Online chat: safechatsv.org | yourywca.org

HEALTH & SUPPORT SERVICES

Alzheimer's Association

1060 La Avenida St.

- Information, support, referrals and education/training
- 24/7 helpline: 800-272-3900; alz.org/norcal

Bay Area Cancer Connections

2335 El Camino Real, Palo Alto

- Support groups, counseling, nutrition workshops and more for people touched by breast or ovarian cancer
- 650-326-6686; toll free: 888-222-4401 | bccconnections.org

Bay Area Funeral Consumers Association

3921 E Bayshore Road #203

- Educates consumers regarding end-of-life options
- 650-321-2109 | bafca.org

Breathe California of the Bay Area

1469 Park Ave., San Jose

- Asthma and anti-tobacco education
- 408-998-5865 | lungsrus.org

El Camino Hospital Health Library

El Camino Hospital (main floor), 2500 Grant Road

- Free access to online databases, clinical and consumer health books, DVDs, and audiovisual materials; research assistance
- 650-940-7379 | elcaminohealth.org (search "health library")

Kara

457 Kingsley Ave., Palo Alto

- Grief support
- 650-321-5272 | kara-grief.org

Mountain View Healthcare Center

2530 Solace Place

- Rehabilitation and subacute programs, post-surgical care, rehabilitation therapies, hospice and respite care, Alzheimer's care unit
- 650-961-6161 | mvhealthcare.com

Pathways

585 N. Mary Ave., Sunnyvale

- Home health and hospice care
- 888-978-1306 | pathwayshealth.org

Pacific Stroke Association

3801 Miranda Ave., Bldg. 6, A-162, Palo Alto

- Monthly support groups for stroke survivors and caregivers
- 650-565-8485 | pacificstrokeassociation.org

Planned Parenthood Mountain View Health Center

2500 California St.

- Family planning and health services
- 650-948-0807 | bit.ly/PPMountainView

Rapid Response Network

1381 South First St., San Jose

- A community defense project developed to protect immigrant families in Santa Clara County
- sacredheartcs.org/rapid-response-network

Stanford Blood Center

515 South Drive, Suite 20

- Independent, community blood center with various donor centers and mobile drives set up throughout the region
- 650-723-7831 | stanfordbloodcenter.org

Stanford Health Library

Various locations. Main Branch: Hoover Pavilion, 211 Quarry Road, Suite 201, Palo Alto

- Provides scientifically based medical information to help people make informed decisions about their health and health care; services are free
- Ask a Librarian: healthlibrary@stanfordhealthcare.org | healthlibrary.stanford.edu | 650-725-8400

HEALTH CLINICS AND HOSPITALS**El Camino Hospital**

2500 Grant Road

- Full-service, acute-care community hospital; serves Mountain View, Los Altos, Los Altos Hills, parts of Palo Alto and surrounding cities
- 650-940-7000 | elcaminohospital.org

El Camino Hospital Maternal Connections

2485 Hospital Drive, ground floor

- Lactation and breastfeeding support
- 650-988-8287 | elcaminohealth.org/locations/maternal-connection

El Camino Surgery Center

2480 Grant Road (El Camino Hospital, Willow Pavilion)

- Ambulatory surgery center and outpatient health care center
- 650-422-7140 | elcaminosurgerycenter.com

Kaiser Permanente - Mountain View (members only)

555 Castro St.

- Non-emergency medical services

- 650-903-3000 | healthy.kaiserpermanente.org (search "Mountain View")

Lucile Packard Children's Hospital Stanford

725 Welch Road, Palo Alto

- Devoted to the care of children and expectant mothers
- 650-497-8000 | stanfordchildrens.org

MayView Community Health Center (member of the Ravenswood Family Health Network)

900 Miramonte Ave., 2nd floor

- Primary medical care for low-income individuals
- 650-327-8717 | ravenswoodfhn.org

Palo Alto Medical Foundation (Sutter Health)

701 E. El Camino Real

- Primary care, urgent care (drop-in)
- Urgent care: 650-934-7800 | sutterhealth.org/pamf

Stanford Health Care

300 Pasteur Drive, Stanford

- Includes the Stanford University Medical Center, Stanford Hospital & Clinics, the Stanford University School of Medicine
- 650-498-3333 | stanfordhealthcare.org
- Stanford Family Practice: 650-723-6963
- Stanford Medical Group: 650-723-6028
- Stanford Referral Center/appointments: 800-756-9000
- Hospital operator: 650-723-4000
- stanfordhospital.org

Stanford Medicine Children's Health

1174 Castro St., Suite 250

- Medical services for young adults ages 12-21
- 650-723-5511 | stanfordchildrens.org

Veterans Affairs Palo Alto Health Care System

3801 Miranda Ave., Palo Alto, and multiple campuses

- General medical, surgical and psychiatric care for veterans
- 650-493-5000 | paloalto.va.gov

HOMELESS SERVICES**Alpha Omega Homeless Services (CSA)**

204 Stierlin Road

- Direct advocacy and assistance for individuals seeking housing assistance, medical/dental services, employment training and money management counseling
- 650-968-0836 | csacares.org

Hope's Corner

748 Mercy St. (corner of Hope street)

- Breakfast, lunch, shower and laundry services; cold weather shelter
- 650-254-1450 | hopes-corner.org

HOUSING**Project Sentinel**

1490 El Camino Real, Santa Clara

- Fair-housing investigation, counseling, education, COVID-19 rent relief and community mediation
- 408-720-9888 | housing.org

MEDIATION**Mountain View Mediation Program (Project Sentinel)**

1490 El Camino Real, Santa Clara

- Advice, conciliation and mediation services to help resolve work, rental and other disputes
- 650-282-2514 | housing.org

SERVICES FOR PEOPLE WITH DISABILITIES**Ability Path**

350 Twin Dolphin Drive, Suite 123, Redwood City

- Support services for children and adults with special needs and developmental disabilities
- 650-259-8500 | abilitypath.org

Vista Center for the Blind and Visually Impaired

2500 El Camino Real #100, Palo Alto

- Rehabilitation program and other services for clients with severe sight loss
- 650-858-0202 | vistacenter.org

VTA Access Paratransit

3331 N. First St., San Jose

- Transportation for individuals who have a disability that prevents them from using public transportation (bus, light rail)
- Information on eligibility: 408-321-2381; reservations: 408-321-2380; TTD: 408-321-2330 | vta.org/go/paratransit

SOCIAL SERVICES**Child Abuse Reporting (Santa Clara County Child Protective Services)**

- 833-722-5437 (24 hours a day, seven days a week)
- 911 (emergency)

Community Services Agency

204 Stierlin Road

- Safety-net services for low-income, homeless and seniors in Mountain View, Los Altos and Los Altos Hills
- 650-968-0836 | csacares.org

Day Worker Center of Mountain View

113 Escuela Ave.

- Connects employees and employers; provides ESL, job readiness and other classes and access to social services
- 650-903-4102 | dayworkercentermv.org

Second Harvest Food Bank of Santa Clara and San Mateo Counties

4001 N. First St. and 750 Curtner Ave., San Jose

- Partners with hundreds of nonprofit agencies to provide food at more than 770 sites, including pantries, soup kitchens, shelters and after-school programs
- Food connection hotline: 800-984-3663; San Jose centers: 408-266-8866 | shfb.org

Social Services Agency — North County District

1330 W. Middlefield Road

- Adult and child welfare services
- 408-278-2400 | sccgov.org (search "social services agency")

Veterans Emergency Social Work Fund

3801 Miranda Ave., Palo Alto

- 650-493-5000 | paloalto.va.gov



A girl enjoys the festivities at the Earth Day Celebration at the Mountain View Community Center in Mountain View on April 22. Photo by Lizzy Myers.

WE MEASURE QUALITY BY RESULTS

Is Quality Important to You?



YvonneandJeff@InteroRealEstate.com

www.yvonneandjeff.com

Yvonne Heyl

Direct (650) 947-4694

Cell (650) 302-4055

yhey@interorealestate.com

BRE# 01255661

Jeff Gonzalez

Direct (650) 947-4698

Cell (408) 888-7748

jgonzalez@interorealestate.com

BRE# 00978793



INTERO.
REAL ESTATE SERVICES

496 First St. Suite 200 Los Altos 94022



Pam Blackman BY THE NUMBERS . . .

Most recent 5 years

Over
90%
of Pam's business is
Seniors & their families

Over
85%
of Pam's business is
repeat and by referral

Over
85%
of Pam's transactions
are listings
representing sellers

100%
of Pam's listings sell
(no matter what
the market conditions)

100%
of Pam's clients get
her one-on-one
personalized service
plus a personally
selected team of resources



Ask me for a digital link to
my 2023 Seller's Guide with
everything I do for my sellers.

650.823.0308
PAM.BLACKMAN@THEAGENCYRE.COM
WWW.PAMBLACKMAN.COM
License #00584333



Pam Blackman

REALTOR®
CERTIFIED RESIDENTIAL SPECIALIST®
SENIORS REAL ESTATE SPECIALIST®

SENIORS

Activities, resources and services located in Mountain View, unless otherwise noted.

MEALS

Meals on Wheels

- Delivers meals to those in need in Santa Clara County
- 408-350-3200 | mysourcewise.com/meals

Hot lunches

Senior Nutrition Program, 266 Escuela Ave. (Mountain View Senior Center)

- Subsidized, hot lunches five days a week for seniors over age 60
- 650-968-0836 | csacares.org

SENIOR CENTERS

Avenidas Rose Kleiner Center

270 Escuela Ave.

- Adult daycare and healthcare for less-independent older adults
- 650-289-5499 | avenidas.org

Mountain View Senior Center

266 Escuela Ave.

- Programs and services for adults 55 and older
- 650-903-6330 | mountainview.gov (search "Senior Center")

RESOURCES

Avenidas Village

450 Bryant St., Palo Alto

- A membership program that provides 24/7 concierge support, transportation assistance, cultural outings and more
- 650-289-5405 | avenidas.org/village-overview

Community Services Agency

204 Stierlin Road

- Nutrition, senior case management, utilities assistance
- See "Social Services" listing in Resources section of Info Guide

Institute on Aging Peninsula

881 Fremont Ave., Suite A2, Los Altos

- Licensed home health agency offering home care, personal care assistance, care management and consultation; offers specialized dementia care
- 650-424-1411 | ioaging.org

Seniors At Home

Koret Family Resource Center, 200 Channing Ave., Palo Alto

- Comprehensive services to help seniors live more independent lives in their own homes
- SeniorsAtHome.org

Sourcewise

3100 De La Cruz Blvd #310, Santa Clara

- Provides various services, including health insurance counseling and advocacy program, care management, Meals on Wheels, senior employment, as well as in-home support services
- 408-350-3200 | mysourcewise.com

Tele-care

- Free program for older adults who live alone
- Volunteers from El Camino Hospital Auxiliary call participants daily at a pre-arranged time to check on their well-being
- 650-988-7558 | elcaminohealth.org/community/tele-care

DOOR-TO-DOOR TRANSPORTATION

Avenidas Door to Door

- Rides by volunteers/Lyft drivers to and from appointments in private cars within a 12-mile radius; pickup service from 8:15 a.m. to 4 p.m. Monday-Friday; advance reservations required; fees charged
- Reservations: 650-289-5411 | avenidas.org/programs/door-to-door

VTA Access Paratransit

3331 N. First St., San Jose

- Transportation for individuals who have a disability that prevents them from using public transportation (bus, light rail)
- Information on eligibility: 408-321-2381; reservations: 408-321-2380;

Members of the HePing Waist Drum and Dance Team perform at Mountain View's Lunar New Year celebration. Photo by Grace Doerfler.

TTD: 408-321-2330 | vta.org/go/paratransit

RoadRunners Transportation Service

2500 Grant Road

- Transportation for medical-related, and personal appointments within 10 miles of El Camino Hospital; pickup services: Monday-Friday 8 a.m. to 3:30 p.m.; clients need not be affiliated with El Camino Hospital; fees charged; advance reservations required
- 650-940-7016 | elcaminohospital.org (search "RoadRunners")



Maria De Lourdes Alcaraz Cornejo, left, and Paula Perez pose next to an altar at the Día de Muertos exhibit in the Mountain View Community Center. Photo by Natalia Nazarova.



Harvest Village volunteer Karen Hurst lends a hand harvesting unwanted backyard fruit to donate to those in need. Photo by Devin Roberts.

Ask about
The Kensington Club,
our new, supportive
program for
assisted living
residents with
early to mild
memory loss



Only the best for you

because the best is all Kensington Senior Living knows how to do

A decade ago, a passionate group of lifelong senior living professionals dreamed of creating senior living residences they'd choose for their own parents, whom they love deeply. They wanted to contribute their knowledge and heart to improve the lives of older adults and their families. And that's just what they've done in California, Maryland, New York and Virginia.

Kensington Senior Living is a partnership of bighearted leaders who made **"a promise to love and care for your family as they do their own."** With deep understanding of older adults and their families, they designed, developed and staffed beautiful residences that reflect decades of expertise and unwavering commitment to uphold their promise. In fact, two moms, a dad and two mothers-in-law of the partners have lived in Kensington communities.

We are pleased to share that we offer best-in-class assisted living and memory care. Day and night, dedicated professionals delivery more comprehensive

care than what many other senior living providers offer. For example, excellent staff-to-resident ratios help deepen connections between caregivers and residents. Pocket programs, which are small-group activities tailored to different interests and abilities, foster friendships and a sense of purpose. Three levels of memory care address the challenges unique to each phase of loss. Couples are welcome and can reside together in the same suite, even if their care needs differ.

The best is here for you. For more information, contact Amber at abrooksher@kensingtonsl.com or (650) 363-9200.



KENSINGTON PLACE

Assisted Living & Memory Care

REDWOOD CITY

— North Atherton —



To learn more,
please scan the
QR code or visit
our website.

Featuring Three Tiers of Care for the Early, Middle and Late Stages of Memory Loss



RCFE License 415600964

(650) 363-9200 | 2800 El Camino Real | Redwood City, CA 94061 | www.KensingtonPlaceRedwoodCity.com



Discover yourself at Harker

Harker is a community of dedicated, passionate learners committed to celebrating a diverse community of students, and fostering an inspiring space for all. Our goal (and greatest joy) is to help all students uncover their unique gifts through our deep and varied offerings and inspiring faculty. With more than 125 years of experience in bringing out the best in children, we are dedicated to continuing that legacy of excellence.

Kindness, respect, honesty, integrity and personal accountability have been in the school's DNA since its founding. Community service, character development curriculum, and our honor code all encourage, develop and reinforce these important qualities.

Many things make Harker special, however small class sizes and our attention to each child's journey is especially unique. Beginning in the lower school, and continuing throughout each student's Harker journey, we carefully evaluate the course placement that best meets a student's talents and interests to ensure that each is challenged, encouraged, engaged and inspired to be their personal and academic best. A vital part of that process involves the offering of extensive curricular and extracurricular offerings to help students discover and nurture talents they may not otherwise have known they have. We do this through our deep and varied offerings and through our incredible and inspiring faculty, for whom we search nationwide. Many hold advanced degrees, and all are passionate about teaching and focused on individual student success.

Harker is a supportive, safe, fun and nurturing place where parents, faculty, staff, students and alumni form a close-knit community through events, traditions and our common mission. Our students leave Harker uncommonly prepared for college and ready to make a difference in the world.

Educating more than 2,000 students TK-grade 12, Harker is the largest independent school of its kind in California, serving families of preschool, elementary, middle and high school-aged children, with each division on its own San Jose campus.



PUBLIC K-12

MOUNTAIN VIEW WHISMAN SCHOOL DISTRICT (GRADES K-8)

ADMINISTRATION OFFICE

1400 Montecito Ave. | 650-526-3500
 Superintendent Ayindé Rudolph:
 supt@mvwsd.org

All schools located in Mountain View unless otherwise noted.

BOARD OF TRUSTEES

The Mountain View Whisman School District's five-member board meets at 6 p.m. on the first and third Thursdays of most months at the District Office. Meetings are currently conducted via Zoom. The board sets direction for the district, approves the annual budget, hires the superintendent and makes other policy decisions.

For more information, go to mvwsd.org/about/board_of_trustees.

Laura Blakely

Member
 Term expires 2024
 lblakely@mvwsd.org

Laura Ramirez Berman

President
 Term expires 2024
 lberman@mvwsd.org

Christopher Chiang

Member
 Term expires 2024
 cchiang@mvwsd.org

Devon Conley

Vice President
 Term expires 2026
 dconley@mvwsd.org

William Lambert

Clerk
 Term expires 2026
 wlambert@mvwsd.org

Bubb Elementary

525 Hans Ave.
 • 650-526-3480 | bubb.mvwsd.org

Castro Elementary

500 Toft St.
 • 650-526-3590 | castro.mvwsd.org

Amy Imai Elementary (formerly Huff Elementary)

253 Martens Ave.
 • 650-526-3490 | imai.mvwsd.org

Jose Antonio Vargas Elementary

220 N. Whisman Road
 • 650-903-6952 | vargas.mvwsd.org

Edith Landels Elementary

115 W. Dana St.
 • 650-526-3520 | landels.mvwsd.org

Gabriela Mistral Elementary (bilingual immersion program)

505 Escuela Ave.
 • 650-526-3575 | mistral.mvwsd.org

Monta Loma Elementary

460 Thompson Ave.
 • 650-903-6915 | montaloma.mvwsd.org

Stevenson Elementary (PACT choice program)

750-B San Pierre Way
 • 650-903-6950 | stevenson.mvwsd.org

Theuerkauf Elementary

1625 San Luis Ave.
 • 650-903-6925 | theuerkauf.mvwsd.org

Crittenden Middle

1701 Rock St.
 • 650-903-6945 | crittenden.mvwsd.org

Graham Middle

1175 Castro St.
 • 650-526-3570 | graham.mvwsd.org

LOS ALTOS SCHOOL DISTRICT (GRADES K-8)

ADMINISTRATION OFFICE

201 Covington Road, Los Altos
 650-947-1150 | lasdschools.org
 Superintendent Sandra McGonagle:
 SMCgonagle@lasdschools.org

All schools located in Los Altos unless otherwise noted.

BOARD OF TRUSTEES

The Board of Trustees meets at 7 p.m. on the first and third Mondays of most months at the District Board Room. For more information, go to lasdschools.org/District/Department/144-School-Board.

Vladimir Ivanovic

Member
 Term expires 2026
 vivanovic@lasdschools.org

Bryan Johnson

Vice President
 Term expires 2026
 bjohnson@lasdschools.org

Vaishali Sirkay

Member
 Term expires 2026
 vsirkay@lasdschools.org

Jessica Speiser

President
 Term expires 2024
 jspeiser@lasdschools.org

Steve Taglio

Member
 Term expires 2024
 staglio@lasdschools.org

Almond Elementary

550 Almond Ave.
 • 650-917-5400 | almondschool.org

Covington Elementary

205 Covington Road
 • 650-947-1100 | covingtonschool.org

Gardner Bullis

25890 Fremont Road, Los Altos Hills
 • 650-559-3200 | gardnerbullis.org

Loyola Elementary

770 Berry Ave.
 • 650-254-2400 | loyolaschool.org

Oak Avenue

1501 Oak Ave.
 • 650-237-3900 | oakschool.org



Camila and Anderson Franco paint at the Mountain View Art and Wine Festival in 2022. Photo by Vivian Cromwell.

Santa Rita Elementary

700 Los Altos Ave.
 • 650-559-1600 | santaritaschool.org

Springer Elementary

1120 Rose Ave., Mountain View
 • 650-943-4200 | springerschool.net

Blach Intermediate

1120 Covington Road
 • 650-934-3800 | blachschool.org

Egan Junior High

100 W. Portola Ave.
 • 650-917-2200 | eganschool.org

Bullis Charter

South campus (K-5): 1124 Covington Road #5005
 North campus (K-8): 102 W. Portola Ave. #1210
 • 650-947-4100 | bullischarterschool.com

MOUNTAIN VIEW LOS ALTOS UNION HIGH SCHOOL DISTRICT (GRADES 9-12)

ADMINISTRATION OFFICE

1299 Bryant Ave.
 650-940-4650 | mvla.net
 Superintendent Nellie Meyer:
 superintendent.office@mvla.net

All schools located in Mountain View unless otherwise noted.

BOARD OF EDUCATION

The Board of Education generally meets the second and fourth Monday of the month in the District Office Board room, 1299 Bryant Ave., starting at 7 p.m. For more information, go to mvla.net/About-MVLA/Board-of-Trustees/index.html.

Thida Cornes

Trustee
 Term expires 2026
 650-940-4650 x 0097 | thida.cornes@mvla.net

Sanjay Dave

Vice President
 Term expires 2024
 650-499-9940 | sanjay.dave@mvla.net

Phil Faillace

President
 Term expires 2024
 650-941-5579 | mvlaifaillace@yahoo.com

Esmeralda Ortiz

Clerk
 Term expires 2026
 650-940-4650 x 0099 | esmeralda.ortiz@mvla.net

Catherine Vonnegut

Trustee
 Term expires 2026
 650-964-6982 | catherine.vonnegut@mvla.net

Alta Vista High

1325 Bryant Ave.
 • Continuation program
 • 650-691-2433 | avhs.mvla.net

Los Altos High

201 Almond Ave., Los Altos
 • 650-960-8811 | lahs.mvla.net

Middle College Program

12345 El Monte Road, Los Altos Hills
 • Alternative program at Foothill College
 • 650-949-7168 | foothillmiddlecollege.org

Mountain View High

3535 Truman Ave.
 • 650-940-4600 | mvhs.mvla.net

Continued on page 36

Continued from page 35

CHILD CARE, PRESCHOOLS, AFTER-SCHOOL PROGRAMS

All schools located in Mountain View unless otherwise noted.

Action Day Primary Plus

333 Eunice Ave.

- Exploration, discovery, semi-structured activities
- Infant care to 5 yrs
- 650-967-3780 | actiondayprimaryplus.com

Ames Child Care Center

270 RT Jones Road

- Play based
- 6 wks to K
- 650-604-5100 | ameschildcare.org

Champions at Covington Elementary

201 Covington Road, Los Altos

- Before and after-school homework time, art, science, cooking and sports
- K-6
- 650-559-7900 | discoverchampions.com

Champions at Santa Rita Elementary

700 Los Altos Ave., Los Altos

- Before- and after-school homework support; activities promoting character, literacy, science, fitness
- Grades 1-6
- 650-917-9300 | discoverchampions.com

Children's House of Los Altos

770 Berry Ave., Los Altos

- Preschool: Open-ended activities, structured group time
- Preschool: 2-5 yrs; After school: K-6
- 650-968-9052 | emeducation.com

Children's House of Los Altos - Gardner Bullis

25890 Fremont Road, Los Altos Hills

- Foreign language experiences
- 2-4 yrs, plus TK
- 650-941-1277 | emeducation.com

Children's Learning Cottage

675 Escuela Ave.

- Indoor/outdoor play, language, math, science/cooking and arts
- 2-5.5 yrs
- 650-564-9906 | clcottage.com

German International School of Silicon Valley (GISSV)

310 Easy St.

- German/English bilingual educational programs
- Preschool: 2-5 yrs; After school: K-12
- 650-254-0748 ext. 300 | gissv.org

Hobbledehoy Montessori Preschool

2321 Jane Lane

- Montessori program with music and dramatic play, reading and writing readiness
- 2-5 yrs
- 650-968-1155 | hobbledehoy.org



Anuj Singh helps his son, Ayanish, up onto a police motorcycle at National Night Out in 2022. Photo by Malea Martin.

Kiddie Academy

205 E. Middlefield Road

- Phonics, math, science, language, art, music and social development
- 6 wks to 4 yrs
- 650-960-6900 | kiddieacademy.com/mountainview

Little Acorn School

1667 Miramonte Ave.

- Play based, Christian
- 1-6 yrs
- 650-964-8445 | littleacorn.org

Mountain View KinderCare

2065 W. El Camino Real

- Play based
- 6 wks-5 yrs
- 650-967-4430 | kindercare.com

Mountain View Parent Nursery School

1535 Oak Ave., Los Altos

- Parent participation school
- Toddlers-5 yrs
- 408-883-5437 | mvpnps.org



WOODLAND SCHOOL
PORTOLA VALLEY

**OPEN HOUSE
PREVIEW DAY
December 2
10:00am**



Woodland School develops collaborative, creative, and confident learners with the strength of voice to follow their hearts and make a difference.

[Register Here](#)



Located just west of 280 at Alpine Road
Preschool through Eighth Grade
woodland-school.org | 650-285-5229
admissions@woodland-school.org



Nothing sparks a child's developing mind like learning an instrument

Silicon Valley comes to CSMA for high-quality teaching and a vibrant music community. While serving 900+ private lesson students, our team achieved a 99.7% satisfaction rate. We offer a complete music education: group classes, ensembles, recitals and free concerts. arts4all.org



community school of music and arts

230 San Antonio Circle, Mountain View



A graduate waits for the commencement ceremony to begin at Mountain View High School. Photo by Marvin Fong.

Mountain View Whisman School District Preschool Program

1850 Latham St. & 1625 San Luis Ave.
 • Developmentally based curriculum
 • 3-5 yrs
 • 650-526-3560 | mvwsd.org

Palo Alto Academy Bilingual Montessori

4232 El Camino Real, Palo Alto
 • Mandarin/English Montessori
 • 2-6 yrs
 • 650-739-0137 | pabilingualmontessori.com

St. Paul Lutheran CDC

1075 El Monte Ave.
 • Montessori, Christian
 • 2.5-6 yrs
 • 650-969-2696 | st-paul.org/cdc

St. Simon Catholic Church Extended Day Care Center and Preschool

1840 Grant Road, Los Altos
 • Whole child, faith based
 • Preschool/pre-kindergarten: 2.5-5 yrs.; Extended: K-8
 • 650-880-1403 | school.stsimon.org

St. Timothy's Preschool

2094 Grant Road
 • Play based
 • 2-4 yrs
 • 650-967-4724 | sttims.org/preschool

Ventana School

1040 Border Road, Los Altos
 • Reggio-inspired Episcopal school
 • 2 yrs to 5th grade
 • 650-948-2121 | ventanaschool.org

YMCA Kids' Place at Almond Elementary

550 Almond Ave., Los Altos
 • 4-12 years
 • After-school activities
 • 408-351-6482 | ymcasv.org

Right at School, Amy Imai Elementary

253 Martens Ave.
 • Before- and after-school programs
 • rightatschool.com

Right at School, Bubb Elementary School

525 Hans Ave.
 • Before- and after-school programs
 • 650-753-9269 | rightatschool.com

Right at School, Edith Landels Elementary

115 W. Dana St.
 • Before- and after-school programs
 • rightatschool.com

Right at School, Gabriela Mistral Elementary

505 Escuela Ave.
 • Before- and after-school programs
 • rightatschool.com

Right at School, Jose Antonio Vargas Elementary

220 N. Whisman Road
 • Before- and after-school programs
 • rightatschool.com

Right at School, Monta Loma Elementary

460 Thompson Ave.
 • Before- and after-school programs
 • rightatschool.com

Right at School, Stevenson Elementary

740 San Pierre Way
 • Before- and after-school programs
 • rightatschool.com

Right at School, Theuerkauf Elementary

1625 San Luis Ave.
 • Before- and after-school programs
 • rightatschool.com

YMCA Kid's Place, Oak Elementary

1501 Oak Ave.
 • 4-12 years
 • Before- and after-school programs
 • 408-351-6482 | ymcasv.org

The Girls' Middle School

Transformative, progressive education at a crucial time in a girl's life.

Register for an **OPEN HOUSE**
 Sept. 30
 Dec. 10

3400 W. Bayshore Road | Palo Alto, CA 94303
 girlsms.org/admission | admissions@girlsms.org | 650-968-8338 x123

HeadsUp! Montessori Preschools

CULTIVATING ASTONISHING POTENTIAL!

- ✓ Year-round, full-day program for children 0-6
- ✓ Individualized Montessori curriculum
- ✓ International curriculum (Chinese, Spanish)
- ✓ Cultivation of thinking skills & personal values
- ✓ Bilingual Chinese-English classroom 中英双语

A GREAT EDUCATION ENROLL NOW!

Palo Alto, 650-424-1221
 San Jose, 408-432-1644
 Pleasanton, 925-463-2885

LEARN MORE www.headsup.org

Continued on page 38

Continued from page 37

**PRIVATE SCHOOLS:
PRE-KINDERGARTEN
TO HIGH SCHOOL**

All schools located in Mountain View unless otherwise noted.

Canterbury Christian School

101 N. El Monte Ave., Los Altos

- Classical Christian school
- canterbury.school

Castilleja School

1310 Bryant St., Palo Alto

- Girls, college prep
- castilleja.org

German International School of Silicon Valley (GISSV)

310 Easy St.

- German/English
- gissv.org

Gideon Hausner Jewish Day School

450 San Antonio Road, Palo Alto

- Coed, college prep, Jewish
- hausnerschool.org

The Girls' Middle School

3400 W. Bayshore Road, Palo Alto

- Girls
- girlsms.org

Helios School

597 Central Ave., Sunnyvale

- Gifted
- heliosschool.org

Imagination Lab School

4050 Middlefield Road, Palo Alto

- Interdisciplinary, coed
- imagination-school.org

Silicon Valley International School

(Formerly International School of the Peninsula before merging with Alto International School in 2021)

475 Pope St., Menlo Park (middle-high school); 151 Laura Lane, Palo Alto (K-5)

- French, Chinese and German language programs from preschool-grade 12
- siliconvalleyinternational.org

Kehillah Jewish High School

3900 Fabian Way, Palo Alto

- Coed, college prep, Jewish
- kehillah.org

The King's Academy

562 N. Britton Ave., Sunnyvale

- Coed, college prep, Christian
- tka.org

Los Altos Christian Schools

625 Magdalena Ave., Los Altos

- Coed, Christian
- lacs.com

Meira Academy

3921 Fabian Way, Palo Alto

- Jewish, girls
- meiraacademy.org

Miramonte Christian School

1175 Altamead Drive, Los Altos

- Seventh-day Adventist Christian
- miramonteschool.org

Mountain View Academy

360 S. Shoreline Blvd.

- Coed, college prep, Christian/Seventh-day Adventist
- mtviewacademy.org

Palo Alto Prep School

2462 Wyandotte St.

- Coed, college prep
- paloaltoprep.com

Pinewood School

Lower campus (K-2): 477 Fremont Ave., Los Altos; Middle campus (3-6): 327 Fremont Ave., Los Altos; Upper campus (7-12): 26800 Fremont Road, Los Altos Hills

- Academics, arts, moral values
- pinewood.edu

St. Joseph Catholic School

1120 Miramonte Ave.

- Catholic
- sjmv.org

St. Nicholas Elementary School

12816 El Monte Road, Los Altos Hills

- Coed, Catholic
- stnicholaslah.com

St. Simon Parish School

1840 Grant Road, Los Altos

- Coed, Catholic
- stsimon.org

St. Francis High School

1885 Miramonte Ave.

- Coed, college prep, Catholic/Holy Cross
- sfhs.com

St. Stephen Lutheran School

320 Moorpark Way

- Coed, Christian based
- ssls.org

Ventana School

1040 Border Road, Los Altos

- Progressive, Reggio-inspired Episcopal
- ventanaschool.org

Waldorf School of the Peninsula

11311 Mora Drive, Los Altos; 180 N. Rengstorff Ave., Mountain View

- Developmentally based experiential curriculum
- waldorfpenninsula.org

Yew Chung International School of Silicon Valley

310 Easy St.

- Mandarin/English immersion
- ycis-sv.com

Continued on page 40

WE'RE PROUD TO BRING OUR READERS SOME OF THE BEST JOURNALISM IN THE STATE.

The annual **California Journalism Awards** competition, which celebrates excellence in reporting, design, photography and multimedia recognized our Peninsula team with **17 awards** in the following categories:

- Arts & Entertainment Coverage
- Coverage of 2022 Elections
- Coverage of Business and the Economy
- Coverage of Youth and Education
- Editorial Comment
- Feature Photo
- Feature Story
- In-Depth Reporting
- Inside Page Layout & Design
- Investigative Reporting
- Land-Use Reporting
- News Photo
- Newsletter
- Open - Investigative Reporting
- Profile Story
- Video Journalism

Please help support the local journalism and the award-winning team that is driven by the desire to bring you fresh, original reporting.

We couldn't do it without you.





At Action Day Schools, we are an extension of your care. We tailor our age-appropriate semi-structured learning environment from birth through 8th grade to enhance unique learning styles. With nurturing caregivers and dedicated teachers, we provide the essential foundation to ensure your child has a bright future ahead!



PROGRAMS INCLUDE

- Infant Care
- Preschool Program
- Private Elementary and Middle School for Jr. Kindergarten through 8th Grade
- After school program by grade level
- Exciting Summer Program
- On-site enrichment opportunities including dance, sports and more!

**10 Bay Area locations throughout
San Jose, Santa Clara,
Campbell, Saratoga, and
Mountain View**

Bright Futures Start Here

NOW ENROLLING!

Birth through 8th Grade

Visit our website for
more information or to
schedule a private
tour today!



Continued from page 38

ADULT SCHOOLS AND HIGHER EDUCATION

Cañada College

4200 Farm Hill Blvd., Redwood City
 • canadacollege.edu

Carnegie Mellon University Silicon Valley Campus

NASA Research Park, Bldg. 23, Moffett Field
 • sv.cmu.edu

De Anza College

21250 Stevens Creek Blvd., Cupertino
 • deanza.edu

Foothill College

12345 El Monte Road, Los Altos Hills; 1070 Innovation Way, Sunnyvale
 • foothill.edu

Menlo College

1000 El Camino Real, Atherton
 • menlo.edu

Mountain View-Los Altos Adult Education

333 Moffett Blvd., Mountain View
 • as.mvla.net

Palo Alto Adult School

50 Embarcadero Road, Portable Building II, Palo Alto
 • paadultschool.org

Palo Alto University

1791 Arastradero Road, Palo Alto
 • paloaltou.edu

Sofia University

1069 E. Meadow Circle, Palo Alto
 • sofia.edu

Stanford Continuing Studies

365 Lasuen St., Stanford
 • continuingstudies.stanford.edu

Stanford University

450 Serra Mall, Stanford
 • stanford.edu

UC Berkeley Extension

4200 Farm Hill Blvd. Redwood City (Cañada College campus)
 • extension.berkeley.edu

UCSC Silicon Valley Extension

3175 Bowers Ave., Santa Clara
 • ucsc-extension.edu

LANGUAGE EDUCATION AND ACADEMIC ENRICHMENT

All school located in Mountain View unless otherwise noted.

Bay Area Arabic School

310 Easy St., German International School of Silicon Valley
 • Arabic language and Islamic studies for children
 • baaschool.org



Members of the Los Alto High Class of 2023 enter the football field during the graduation ceremony at Los Altos High School. Photo by Federica Armstrong.

Kumon Math and Reading Center

1253 W. El Camino Real; 1780 Miramonte Ave.
 • After-school program for reading and math skills
 • 408-222-1500; 650-966-6600 | kumon.com

Nine Fruits Bilingual School

2484 Old Middlefield Way
 • ninefruits.org

Stanford Chinese School

780 Arastradero Road, Palo Alto
 • Mandarin classes; ages 6+
 • mychineseschool.com

W V D C
 WEST VALLEY *Dance* COMPANY

NOW ENROLLING!



Your Premiere Dance Studio
 Offering Year-Round Classes in
 • Ballet • Ballroom • Jazz
 • Hip Hop • Tap • Lyrical
 • Acro • Bollywood
 Including Performance and Competitive
 Dance Teams for Girls and Boys ages 4-18

- STUDIOS**
- BASCOM STUDIO**
1226 S. Bascom Avenue, San Jose, CA 95128
(408) 217-8106
 - MOUNTAIN VIEW STUDIO EAST**
820 E.El Camino Real, Unit H, Mt. View, CA 94040
(650) 695-5937
 - MOUNTAIN VIEW STUDIO WEST**
1939 W. El Camino Real, Mt. View, CA 94040
(650) 695-5937

- WILLOW GLEN STUDIO**
2184 Lincoln Avenue, San Jose, CA 95125
(408) 907-4663
- WEST VALLEY DANCE BOUTIQUE**
1228B S Bascom Ave, San Jose, CA 95128
(408) 907-4629

Scan the QR code to Schedule a FREE trial class

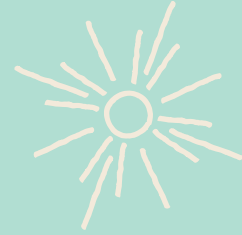


www.westvalleydanceco.com

Holidays

at

filoli



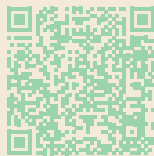
Merry & Bright

**Aglow Every
Day and Night**

OPEN DAILY
Nov 19 – Jan 8

DAYTIME
10am – 4pm

EVENING
4pm – 9pm



86 Cañada Road
Woodside CA, 94062
650.364.8300
filoli.org



THE ARTS

Facilities located in Mountain View unless otherwise noted.

LITERARY ARTS

Books Inc.

317 Castro St.

- Book launches, author lecture series
- booksinc.net

East West Bookshop

324 Castro St.

- New Age/metaphysical books, author events
- eastwestbooks.org

Kepler's Literary Foundation

1010 El Camino Real #100, Menlo Park

- Conversations, classes and seminars
- keplers.org

Mountain View Library

585 Franklin St.

- Author events
- bit.ly/MVVirtualLibrary

GALLERIES

Gallery 9

143 Main St., Los Altos

- Monthly exhibitions of member artists
- gallery9losaltos.com

Mohr Gallery, Community School of Music and Arts at Finn Center

230 San Antonio Circle

- Artwork by local and international artists
- arts4all.org

Viewpoints Gallery

315 State St., Los Altos

- Fine art by local artists
- viewpointsgallery.com

MOVIE THEATERS

Century Cinema 16

1500 N. Shoreline Blvd.

- bit.ly/Century16

ShowPlace ICON Mountain View

2575 California St. #90

- showplaceicon.com

Stanford Theatre

221 University Ave., Palo Alto

- stanfordtheatre.org

Murals sit along the perimeter of the park at the Los Altos Juneteenth festival in 2022. Photo by Miles Breen.



MUSEUMS

Computer History Museum

1401 N. Shoreline Blvd.

- Large international collection of computing artifacts
- computerhistory.org

Los Altos History Museum

51 S. San Antonio Road, Los Altos

- Permanent/changing exhibits, J. Gilbert Smith History House
- losaltoshistory.org

Moffett Field Historical Society Museum

Bldg. 126, Severyns Ave., Moffett Field

- Aircraft displays, artifacts from post-1930
- moffettfieldmuseum.org

Museum of American Heritage

351 Homer Ave., Palo Alto

- Permanent and rotating exhibits emphasize invention and technology from 1750-1950
- moah.org

Rengstorff House

3070 N. Shoreline Blvd.

- Artifacts and images of 19th-century life
- friendsofrhouse.org

PERFORMING ARTS

Foothill Music Theatre

Smithwick Theatre, 12345 El Monte Road, Los Altos Hills

- Produces classic to contemporary musicals
- foothill.edu/theatre

Los Altos Stage Company

Bus Barn Theater, 97 Hillview Ave., Los Altos

- Neighborhood playhouse focused on American theater
- losaltosstage.org

The Pear Theatre

1110 La Avenida St.

- Hosts full plays, plus an annual short-works festival, "Pear Slices," created by members of its playwrights' guild
- thepear.org

Peninsula Youth Theatre

2500 Old Middlefield Way

- Award-winning youth theater company
- pytnet.org

TheatreWorks Silicon Valley

Mountain View Center for the Performing Arts (500 Castro St.) and Lucie Stern Theatre (1305 Middlefield Road, Palo Alto)

- Tony Award-winning theater troupe
- theatreworks.org

Shoreline Amphitheatre

1 Amphitheatre Parkway

- Large outdoor venue hosting classical and contemporary performances and music events
- mountainviewamphitheater.com

Schultz Cultural Arts Hall

Oshman Family JCC, 3921 Fabian Way, Palo Alto

- Hosts music, theater, comedy and speaker events
- paloaltojcc.org

Tateuchi Hall, Community School of Music and Arts at Finn Center

230 San Antonio Circle

- Concert hall hosting a variety of music events
- arts4all.org

STANFORD ARTS DISTRICT

Stanford University's Arts District provides ample opportunities to experience the arts. The area includes a concentration of museums, galleries and performances spaces around Palm Drive. Visitors can easily spend the entire day exploring the district's sculpture garden, free museums and modern architecture, or taking in a performance.

Anderson Collection at Stanford University

314 Lomita Drive

- Modern American paintings and sculptures
- anderson.stanford.edu

Bing Concert Hall

327 Lasuen St.

- Music, dance, theater performances
- live.stanford.edu (search "Bing")

Cantor Arts Center at Stanford University

328 Lomita Drive

- 24 art galleries, Rodin Sculpture Garden
- museum.stanford.edu

Dinkelspiel Auditorium

471 Lagunita Drive

- Used by Stanford's Department of Music
- music.stanford.edu (listed under: Venues - Dinkelspiel)



Chalk artists draw at the Art & Wine Festival in Mountain View. Photo by Vivian Cromwell.

Frost Amphitheater

Lasuen Street and Roth Way

- 20-acre, tiered outdoor performance space
- live.stanford.edu (search "Frost Amphitheater")

McMurtry Building

355 Roth Way

- Indoor-outdoor screening and exhibition spaces, Coulter Art Gallery
- arts.stanford.edu (search "McMurtry Building")

Memorial Auditorium

551 Jane Stanford Way

- Home of the Department of Theater & Performance Studies (TAPS)
- live.stanford.edu (search "Memorial Auditorium")

Nitery Theater

Nitery Building in the Old Union, 514 Lasuen Mall

- Black-box theater, student productions
- taps.stanford.edu

Pigott Theater

551 Jane Stanford Way

- Used by Stanford's Drama Department
- taps.stanford.edu

Roble Gymnasium

375 Santa Teresa St.

- Rehearsal, dance and performance spaces for students
- taps.stanford.edu (listed under: About - Main Buildings)

Thomas Welton Stanford Art Gallery

419 Lasuen Mall

- Features student, faculty and other artists' work
- art.stanford.edu (listed under: Exhibition Spaces - Stanford Art Gallery)

GOVERNMENT

Mountain View is a charter city that operates under a City Council-City Manager form of government. The mayor and vice mayor hold one-year terms that expire in January. The general municipal election is held in even-numbered years, the first Tuesday after the first Monday of November. Council terms are four years.

Regular council meetings are held at 6:30 p.m. on the second and fourth Tuesday of each month.

Meetings are held at City Hall, 500 Castro St., unless otherwise noted.

CITY COUNCIL

City Hall

500 Castro St. | 650-903-6300
mountainview.gov

Margaret Abe-Koga

Member

Term expires: 2025
650-291-0167 | margaret.abe-koga@mountainview.gov

Alison Hicks

Mayor

Term expires: 2027
alison.hicks@mountainview.gov

Ellen Kamei

Member

Term expires: 2027
ellen.kamei@mountainview.gov

Lisa Matchak

Member

Term expires: 2025
650-207-0838 | lisa.matchak@mountainview.gov

Lucas Ramirez

Member

Term expires: 2027
650-903-6304 | lucas.ramirez@mountainview.gov

Emily Ann Ramos

Member

Term expires: 2025
emily-ramos@mountainview.gov

Pat Showalter

Vice Mayor

Term expires: 2025
pat.showalter@mountainview.gov

LOCAL GOVERNMENT

Council-appointed officers

City Attorney Jennifer Logue,
650-903-6303

City Clerk Heather Glaser, 650-903-6304

City Manager Kimbra McCarthy,
650-903-6301

Department heads

Assistant City Manager
Arn Andrews, 650-903-6610

Community Development Director
Aarti Shrivastava, 650-903-6456

Community Services Director
John Marchant, 650-903-6074

Finance and Administrative Services Director Derek Rampone, 650-903-6006

Fire Chief Juan Diaz, 650-903-6365

Chief Information Officer Roger Jensen,
650-903-6027

Housing Director Wayne Chen

Library Director Tracy Gray, 650-903-6866

Police Chief Mike Canfield, 650-903-6478

Public Works Director Dawn Cameron,
650-903-6311



Mountain View's downtown is home to about a dozen sculptures, murals and other visual arts displays in the city's public art program. Photo by Kevin Legnon.

Boards, commissions and committees

Meetings are held at City Hall, 500 Castro St., unless otherwise noted. Check city website for updated status on in-person meetings or how to access virtual meetings.

Bicycle/Pedestrian Advisory

Meets monthly except May, July and December, last Wednesday, 6:30 p.m., Plaza Conference Room. Staff liaison: Brandon Whyte, 650-903-6311 | bpac@mountainview.gov

Downtown Meets as needed, on a Tuesday, 10 a.m., Plaza Conference Room. Staff liaisons: John Lang and Tiffany Chew, 650-903-6306 | dc@mountainview.gov

Environmental Planning Meets first and third Wednesdays, 7 p.m., Council Chambers, second floor. Staff liaison: Eric Anderson, 650-903-6306 | epc@mountainview.gov

Human Relations Meets first Thursday, 6:30 p.m., Plaza Conference Room. Staff liaison: Laurel James, 650-903-6301 | hrc@mountainview.gov

Library Board Meets third Monday, 7:30 p.m., Library Conference Room, 585 Franklin St. Staff liaison: Tracy Gray, 650-903-6866 | lb@mountainview.gov

Parks and Recreation Meets second Wednesday, 7 p.m., Community Center, 201 S. Rengstorff Ave. Staff liaisons: John Marchant and Allison Flynn, 650-903-6331 | prc@mountainview.gov

Performing Arts Meets third Wednesday, 6:15 p.m., Atrium Conference Room. Staff liaisons: Theresa Yvonne, 650-903-6565 | pac@mountainview.gov

Public Safety Advisory Board Typically meets fourth Thursday, 7 p.m., Plaza Conference Room. Staff liaisons: Audrey Seymour Ramberg, 650-903-6610 and Mike Canfield, 650-903-6681 | psab@mountainview.gov

Rental Housing Meets every month on a Monday, 7 p.m., Council Chambers. Staff liaison: Anky van Deursen, 650-903-6131 | rhc@mountainview.gov

Senior Advisory Meets third Wednesday, 2 p.m. (except August and December), Senior Center, 266 Escuela Ave. Staff liaisons: Michele Petersen and Alejandra Hernandez, 650-903-6330 | sac@mountainview.gov

Visual Arts Committee Meets second Wednesday, 6 p.m., Atrium Conference Room. Staff liaisons: John Lang, 650-903-6306 | sac@mountainview.gov

Youth Advisory Meets first Monday of the month, 4:30 p.m., The View Teen Center, 263 Escuela Ave. Staff liaisons: Greg Milano and Lauren Eck, 650-903-6331 | yac@mountainview.gov

REGIONAL GOVERNMENT

Editor's note: Some meetings may be held virtually. Check status in advance of regularly scheduled meetings listed below.

Board of Supervisors, Santa Clara County

70 West Hedding St., San Jose

- District 5 supervisor: Joe Simitian
- The elected policy-making body of Santa Clara County
- Board meetings: 9:30 a.m. Tuesdays, 2-3 times monthly
- 408-299-5001 | sccgov.org

SPECIAL DISTRICTS

El Camino Healthcare District

2500 Grant Road

Chief Executive Officer: Dan Woods

- Board of Directors meets quarterly (January, March, June, October) at 5:30 p.m. in the hospital's conference center
- 650-940-7000 | elcaminohealthcaredistrict.org

Midpeninsula Regional Open Space District

330 Distel Circle, Los Altos

- General manager: Ana Marla Ruiz
- Acquires and preserves natural open space, maintains more than 62,000 acres of open space

- Board meetings: 7 p.m., second and fourth Wednesday of the month at the district office
- 650-691-1200 | openspace.org

Santa Clara Valley Water District

5750 Almaden Expressway, San Jose

- District 7: Rebecca Eisenberg
- Provides wholesale water supply and flood management to the county
- District 7 Directors meetings: 9:30 a.m., second and fourth Tuesdays of the month
- 408-265-2600 | valleywater.org

SCHOOL DISTRICTS

Foothill-De Anza Community College District

12345 El Monte Road, Los Altos Hills

- Chancellor: Lee Lambert
- Board of Trustee meetings: 6 p.m., first Monday of the month in the District Office Building (D700) Board Room (Room 101) on the Foothill campus
- 650-949-6100 | fhda.edu

Santa Clara County Office of Education

1290 Ridder Park Drive, San Jose

- Superintendent: Mary Ann Dewan
- Board of Trustee meetings: 5 p.m., first and third Wednesdays of the month
- 408-453-6511 | sccoe.org

Continued on page 44

Fiesta Del Mar TOO
Gourmet Mexican Cuisine

SEAFOOD, ROTISSERIE, MEXICAN CUISINE & CANTINA

Fiesta Del Mar TOO
735 Villa Street, Mountain View
650-967-3525
fiestadelmar.com

Tuesday - Thursday 5:00 PM - 8:00 PM
Friday - Saturday 5:00 PM - 8:30 PM
Sunday 5:00 PM - 8:00 PM

Mountain View Civic and Community Facilities



Continued from page 43

CIVIC AND COMMUNITY FACILITIES

Services and programs may vary due to COVID-19 reopening policies.

- 1 Avenidas Rose Kleiner Center**
270 Escuela Ave. Adult day care and adult day health care for the less-independent older adult. Transportation, therapies, group exercises, recreation and lunch. Sliding-scale fee.
• 650-289-5499 | avenidas.org/care
- 2 Community Services Agency**
204 Stierlin Road. Safety-net services for low-income persons: emergency rent and utility assistance, food, homeless services, senior case management and senior lunch.
• 650-968-0836 | csacares.org
- 3 City Hall** 500 Castro St. Headquarters for city departments, services and meetings.
• 650-903-6337 | mountainview.gov

- 4 Day Worker Center of Mountain View** 113 Escuela Ave. Connects skilled workers to employers in need of yard, construction, house or event labor. Offers ESL and other education, access to social services.
• 650-903-4102 | dayworkercentermv.org

- 5 Fire Station No. 1***
251 S. Shoreline Blvd.
- 6 Fire Station No. 2***
160 Cuesta Drive
- 7 Fire Station No. 3***
301 N. Rengstorff Ave.
- 8 Fire Station No. 4***
229 N. Whisman Road
- 9 Fire Station No. 5***
2195 N. Shoreline Blvd.

* Fire Department: 650-903-6365 | mountainview.gov/our-city/departments/fire

- 10 Mountain View Public Library**
585 Franklin St. Books, audio, videos, digital collection, mobile service, events, homework help, Internet access.
• 650-903-6337 | library.mountainview.gov
- 11 Mountain View Community Center**
201 S. Rengstorff Ave. Classes, recreation programs, meeting space.
• 650-903-6407 | mountainview.gov
- 12 Mountain View Senior Center**
266 Escuela Ave. Programs and services for adults 55 and older, including classes, referrals and social services, activities, a community garden and lunch.
• 650-903-6330 | mountainview.gov, search for "Senior Center"
- 13 Police Department** 1000 Villa St. Crime prevention, reduction and intervention. Also offers crime statistics, ride-alongs, department tours, permit and license information.
• 650-903-6395

- 14 Post Office (Main)** 211 Hope St. Retail, passport photo, P.O. boxes, self-service kiosk.
• 650-960-6851 | usps.com
- 15 Recycling Center** 935 Terra Bella Ave. Buy-back and recycling drop-off center; The Buy-Back Center for the redemption of CRV containers is open noon to 4 p.m. Tuesday-Friday and 9 a.m. to 4 p.m. Saturday.
• 650-967-3034
- 16 Social Services Agency**
1330 W. Middlefield Road. Adult and child welfare services. Distributes food stamps, MediCal and cash aid. Runs hotlines for child and elder abuse reporting.
• 408-278-2400
- 17 The View Teen Center** 263 Escuela Ave. The View offers programs for grades 6-12, including recreational and educational classes, special events, resources and drop-in activities.
• 650-903-6333 | mountainview.gov (search "The View Teen Center")

NEIGHBORHOODS

Mountain View is made up of 25 neighborhoods contained within 12.2 square miles. Here's a glimpse of each area's distinctive features and contact information for its neighborhood associations. Neighborhood data from Weichart, Nextdoor.com and the city's Mountain View Neighborhood Associations & Groups list.

Blossom Valley

Mostly single-story 1950s-era ranch homes built on former orchards

Castro City

Quiet, six-square-block enclave located across the street from Rengstorff Park

Cuernavaca

170 Spanish-style homes that rest on 30 acres of land

- Cuernavaca Homeowners Association: cuernavacahoa.com

Cuesta Park

Tree-lined streets with predominantly one-story ranch homes on similar lot sizes

- Cuesta Park Homeowners Association: cuestapark.info

Dutch Haven

Near YMCA, Stevens Creek Trail, shopping

Eastern Varsity Park

Mix of modernist remodels clustered around Varsity Park

Gemello

Traditional and classic neighborhood with mostly 1950s-era homes on former winery land

Jackson Park

Eclectic mix of old and new homes surrounded by city parks

Martens-Carmelita

Mix of original and remodeled homes with wide verandas and modern profiles built between the 1930s and 1950s

Moffett Boulevard

Mix of condos and single-family homes; easy access to Caltrain, light rail, Highways 85 and 101

Monta Loma

Near Palo Alto border; predominantly homes built by Mid-century design icons Eichler, Mackay and Mardell Building Company

- Monta Loma Neighborhood Association: president@montaloma.org, montaloma.org

North Whisman

Area nestled between Google and Symantec

Old Mountain View

Bustling neighborhood in the heart of downtown

- Old Mountain View Neighborhood Association: omvna.org

Rex Manor

Diverse area located near downtown shopping and entertainment

St. Francis Acres

Mix of original and remodeled California ranch-style homes near Los Altos border

San Antonio

Diverse neighborhood nestled next to the San Antonio Caltrain station

Shoreline West

Mostly small, single-story homes built pre-1960

- Shoreline West Association of Neighbors: shorelinewestmv@gmail.com, shorelinewestmv.com

Slater

Mostly 1950s-era duplexes with western motif wagon wheels stuck into brick facades



A Mountain View youth enjoys the play equipment at the newly unveiled Mora Park in 2022. Photo by Malea Martin.

Springer Meadows

Subset of Blossom Valley with ranch-style homes

Stierlin Estates

Tract development with mostly one-story, 1960s-era homes

Continued on page 46

Old Becomes New

57th

ANNIVERSARY



BEFORE

AFTER

Ask about our \$92.50 Labor Special & Other Specials

FREE LOCAL PICKUP & DELIVERY • FREE CONSULTATION

Sterling Custom Upholstery



1243 W. El Camino Real, Mountain View
(At Miramonte - behind Baskin-Robbins)
650.961.8700
www.SterlingCustomUpholstery.com



Mountain View neighborhoods



Continued from page 45

Sylvan Park

Mix of single-family homes, mobile-home parks, apartments and duplexes near downtown

Wagon Wheel

Named after a local watering hole back in the day whose patrons were engineers from Fairchild Semiconductor, Intel and National Semiconductor

Waverly Park

Developed in the 1960s on former apricot and prune orchards

Whisman Station

Planned community with single-family homes, condos and townhomes that opened in 1997

- Whisman Station HOA: whismanstationhoa.connectresident.com

Willowgate

Close to downtown amenities, Stevens Creek Trail



Barber Mireya Lopez spreads shaving cream on Eli Bressert's face at Dandies Barbershop in Mountain View. Photo by Magali Gauthier.

INFO MOUNTAIN VIEW

PUBLISHER

Adam Dawes

EDITORIAL

Editor:
Kevin Forestieri

Info Editor:
Linda Taaffe

Photographer:
Magali Gauthier

Contributor:
Emma Donnelly Higgins

ART & PRODUCTION

Design Director:
Kristin Brown

Contributing Designers:
Linda Atilano, Paul Llewellyn,
Mary Watanabe, Douglas Young

ADVERTISING

Major Accounts Sales Manager:

Connie Jo Cotton

Display Advertising:
Elaine Clark

Real Estate Advertising:
Neal Fine

Advertising Services:
Kevin Legarda, Diane Martin

Info Mountain View is a special project of Mountain View Online. ©2023 by Embarcadero Media Co. All rights reserved. Reproduction without permission is strictly prohibited.

Info Mountain View contains some information about neighboring communities, but more complete details are in *Info Menlo* and *Info Palo Alto* — available at Embarcadero Media, 450 Cambridge Ave., Palo Alto, as well as at local bookstores and other outlets.

Go to MV-Voice.com for the latest news, A&E, home and real estate, Town Square discussion forum and more.

Mountain View Voice
ONLINE

450 Cambridge Avenue
Palo Alto, CA 94306
650-964-6300



TERRI COUTURE

Realtor®

**ACROSS SANTA CLARA & SAN MATEO COUNTIES
TERRI MAKES YOUR REAL ESTATE NEEDS HER #1 PRIORITY.**



ATHERTON



CUPERTINO



LOS ALTOS



LOS ALTOS HILLS



MENLO PARK



MOUNTAIN VIEW



PALO ALTO



SUNNYVALE



WOODSIDE

**WHY SHOULD YOU
CHOOSE TERRI?**

- ✓ *Top 1% agent - locally & nationally*
- ✓ *Years of experience & expert level know-how*
- ✓ *Data-driven decision-making*
- ✓ *Personal & clear communication*
- ✓ *Hundreds of happy clients*



Terri Couture
650.917.5811

terri.couture@cbnorcal.com
www.terrincouture.com
DRE # 01090940



The property information herein is derived from various sources that may include, but not be limited to, county records and the Multiple Listing Service, and it may include approximations. Although the information is believed to be accurate, it is not warranted and you should not rely upon it without personal verification. Real estate agents affiliated with Coldwell Banker Residential Brokerage are independent contractor sales associates, not employees. © 2022 Coldwell Banker Residential Brokerage. All Rights Reserved. Coldwell Banker Residential Brokerage fully supports the principles of the Fair Housing Act and the Equal Opportunity Act. Owned by a subsidiary of NRT LLC. Coldwell Banker and the Coldwell Banker Logo are registered service marks owned by Coldwell Banker Real Estate LLC.



<https://mls-client.com/DS6C8C07>

COLDWELL BANKER
175 S San Antonio Rd, Suite 1, Los Altos, CA 94022

Accept Nothing Less

than care that's ten
years ahead and
ten minutes away.

Leading-edge technology and innovative care are easy to access at El Camino Health. With two acute care hospitals, specialized centers for mental health and women and newborn services, a rehabilitation hospital, and a network of world-class doctors and nurses, excellent healthcare is available right in your neighborhood. #AcceptNothingLess

Learn more at elcaminohealth.org/accept-nothing-less

